

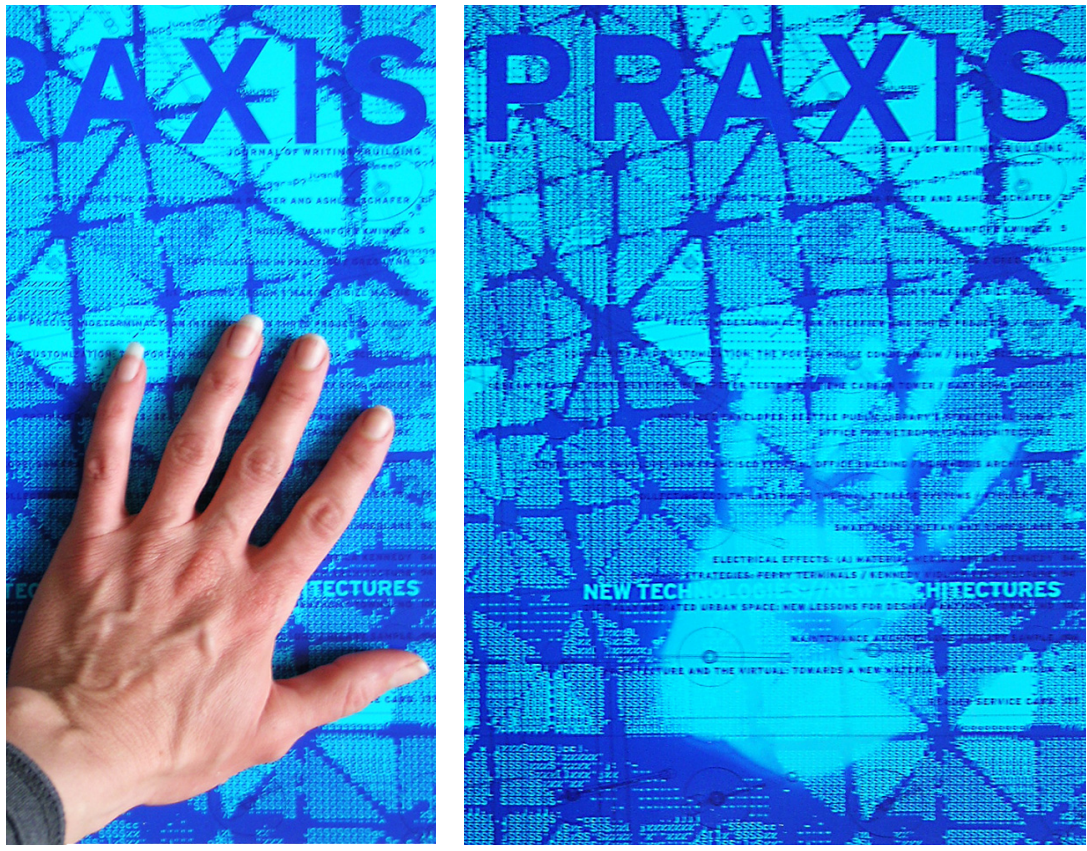
Antonito Community Center, Guadalupe

The Community Center is located next to the Elementary School and can connect to the adjacent cemetery through a Heritage Garden. The Community Center is to be constructed of local building materials, such as pumice gabbro, adobe and sagebrush resin panels. Both the building and the garden would serve as an important part of the community and incorporate heritage as an educational element contributing to the revitalization of Antonito.



Prada Marfa

Prada Marfa is a minimalist sculpture that replicates the luxury boutique where the Fall 2005 line of Prada shoes and bags were to be displayed. The primary building material used to construct Prada Marfa is dirt. While it may seem odd to construct a building with soil, particularly one with the associated title Prada, building with earth is actually quite common. It is estimated that currently more than 3 billion people on 6 continents, lives, works, or worships in buildings constructed of raw earth.



Praxis

PRAXIS: The Journal of Writing + Building, was founded in 1999 to provide an alternative means of addressing architecture, featuring work outside of the geographic and celebrity mainstream. The cover of issue 6 is the first to use thermochromic silk screen ink, which becomes opaque when cooled and transparent when warm. When warmed by the hands of the reader, the cover reveals the Table of Contents of the journal, by exposing the hidden layer behind the thermochromic ink.



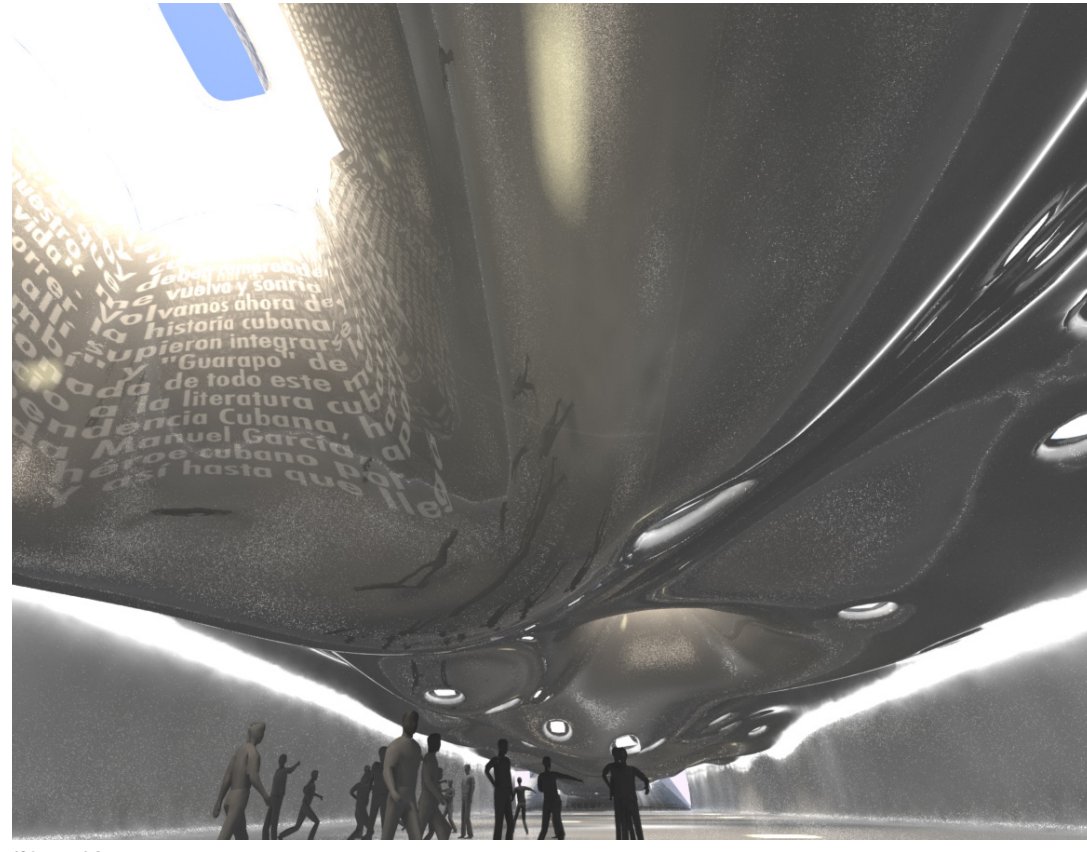
Ecole de Tentou

The round house is an iconic form in Mali and the familiarity with this form was used in the design of the school, Ecole de Tentou. The shape creates interesting spatial relationships below the canopy and allows for the rethinking of pedagogical spatial organization within the classroom. The metal roofs in markets provide flexibility and overhead shade in the 120-degree heat.



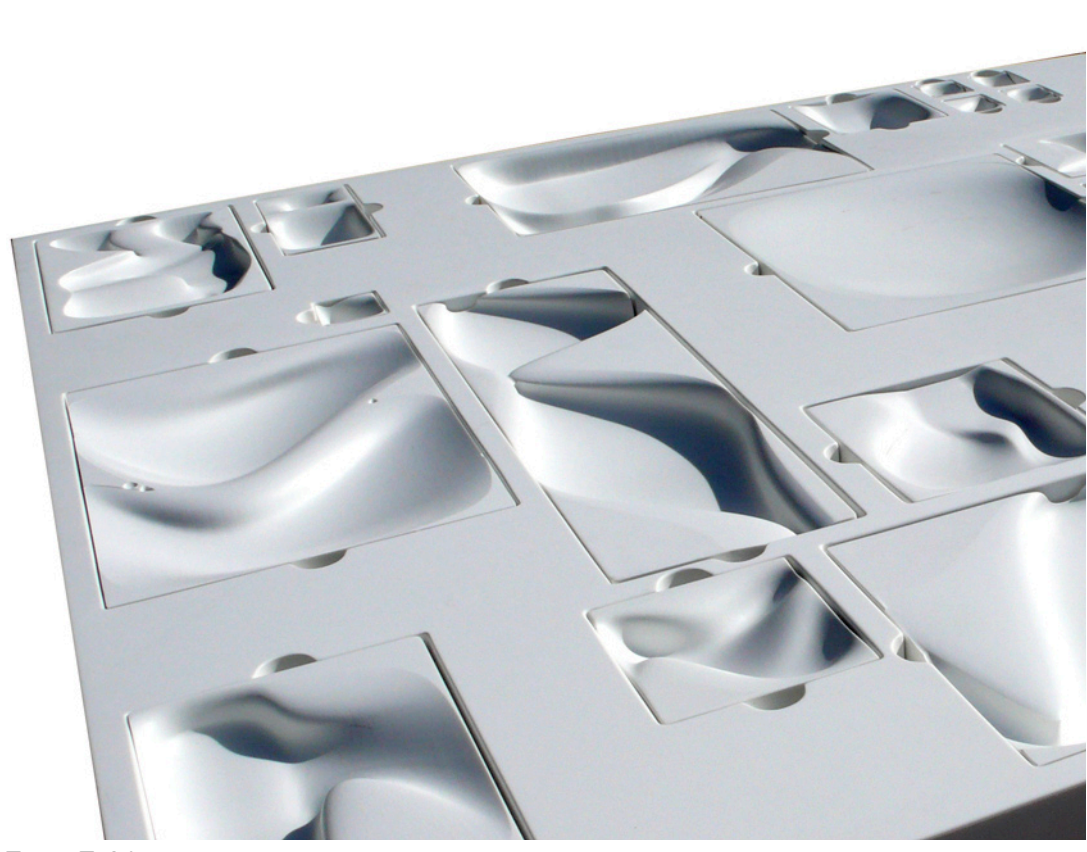
Casa Inmovil

Casa Inmovil is a house of two contemporary living spaces constructed of adobe which are carefully placed beneath an airy and light canopy that collects water and provides plenty of outdoor shade. The two separate living units, one containing cooking/living and the other, sleeping and bathing, are in the tradition in Chihuahuan vernacular farm buildings out in the desert, on ranches and in hamlets.



Pier-Museum

Located at the end of Fifth Avenue leading to South Beach, in the Miami Beach Area, is a "Pier-Museum" which, pointing out to sea, stands a horizontal monument to all the immigrants who have arrived on these shores in search of a better future. Visitors to the Pier-Museum will enter the museum by descending into a void below the beach. The void is populated by 200 light shafts and 10 commemorative spaces along the journey to the final destination which is the museum.



Topo Table

The Topo Table is a landscape for dining. Embedded into the surface of the table are dishes that have a flat surface for storing on one side a topography for the organization of edibles on the other. The table and dishes are dishwasher safe corian.



Living Water Activity Chapel

Living Water Church has built a new youth recreation center with walls that will be made out of one of God's creations — ivy. The indoor/outdoor recreation facility has a metal mesh-like casing around its steel beams that ivy will soon grow up.



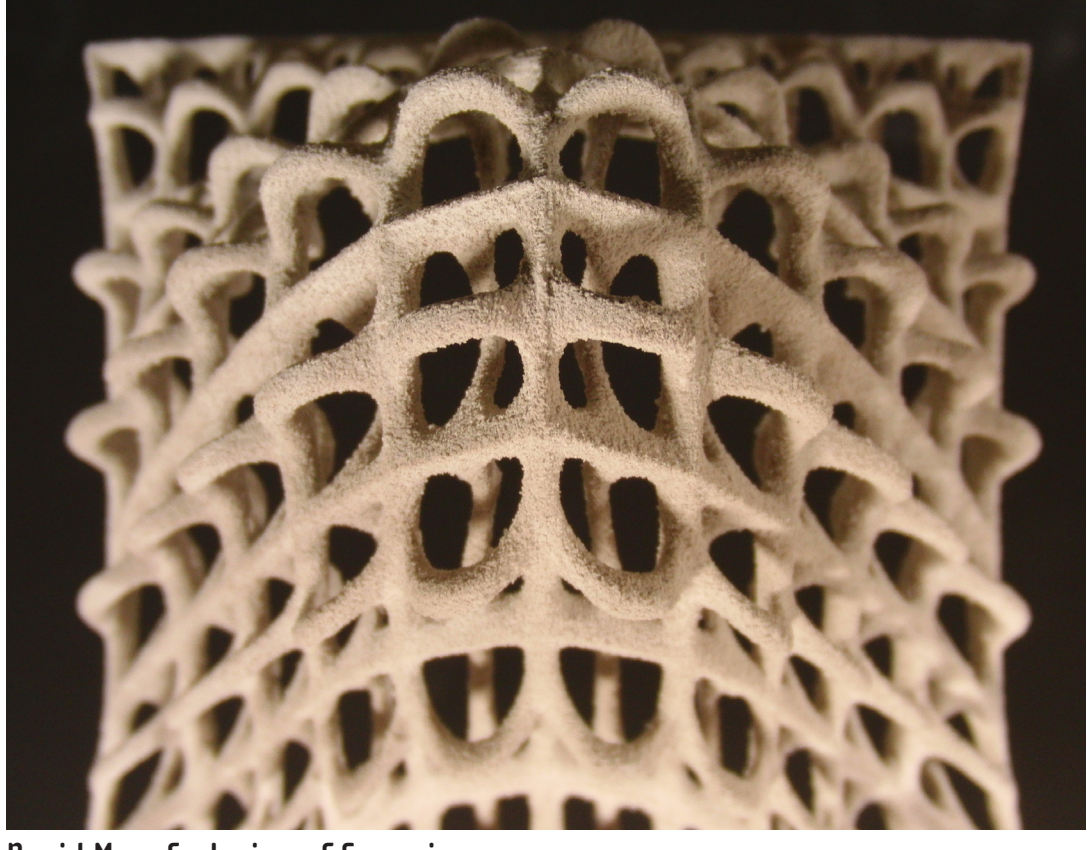
Night Garden

The Night Garden is a vertical landscape built of glowing porcelain tiles within a steel structure supporting translucent vessels designed to hold water and night blooming flowers. The installation references the traditional construction material, such as wrought iron, brick, tile, the intentional placement of water, and the historic relevance of fire. Designed in collaboration with Berkeley Graduate Architecture Students.



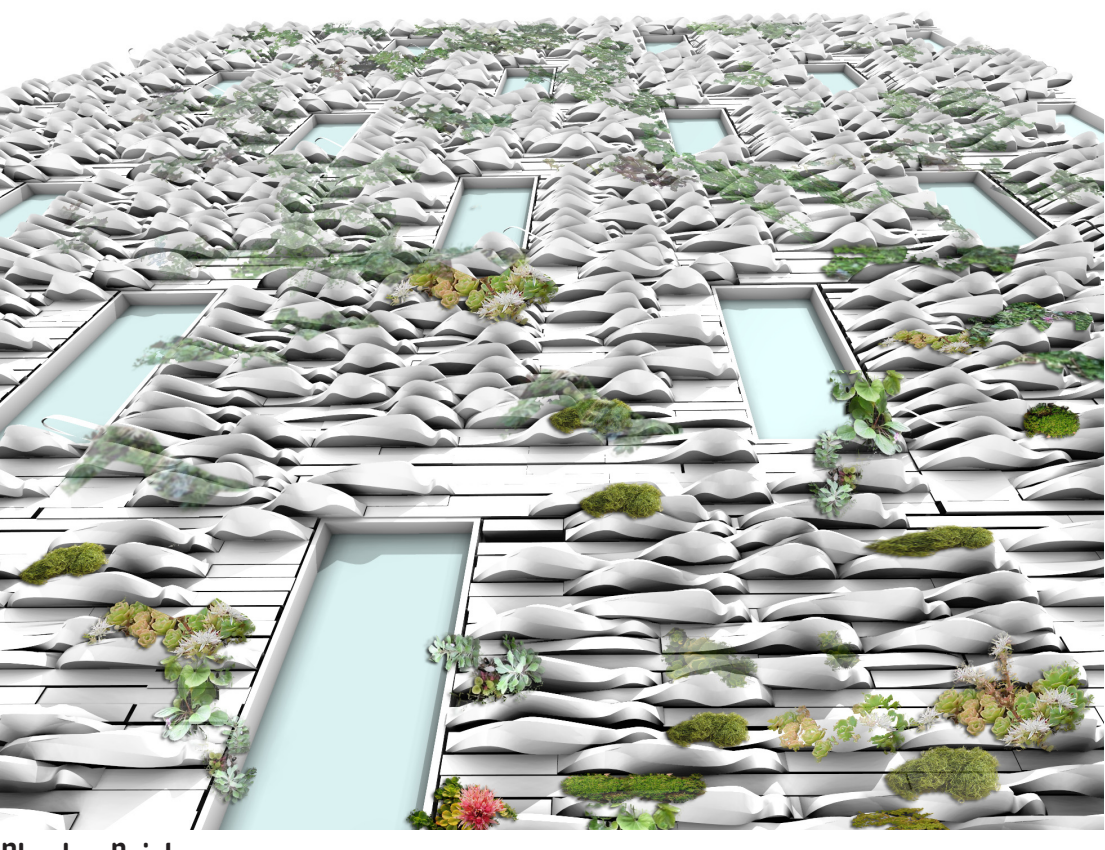
Bay Line

This project seeks to demonstrate the potential for re-purposing the historic American bridge infrastructure as possible sites for sustainable urban housing and linear parks. The eastern section of the Bay Bridge in San Francisco/Oakland, which is currently being replaced by a new concrete bridge structure, serves as a prototype for considering the potential of re-utilizing bridge infrastructure to create new social, housing and sustainable infrastructures.



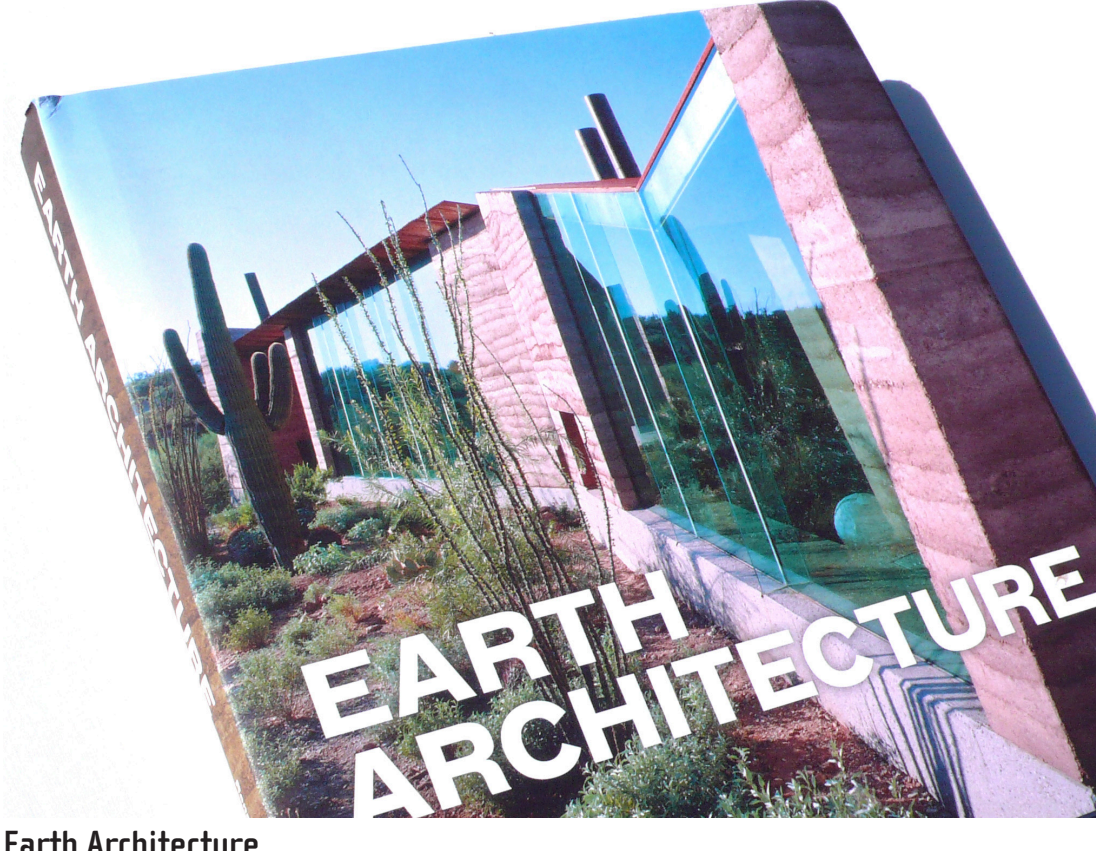
Rapid Manufacturing of Ceramics

Earth comprises the most widely used building material on the planet. This research posits a future scenario for the material—one that employs digital design and manufacturing processes employing recycled glass, clay bodies and fly ash—a replacement for Portland cement and for advanced high-tech composites—and ceramic applications for the production of long-lasting performance based components.



Planter Bricks

The planter brick wall is designed to be a combination of traditional masonry units combined with units that can hold plants and vegetation. The plants matched with the bricks require little, if any, soil, but they do need water and nutrients. The planter bricks have the potential to counter the heat island effect in big cities through evapotranspiration and pollution conversion and by the light, reflective color of the bricks.



Earth Architecture

EARTH ARCHITECTURE provides a history of building with earth in the modern era, focusing particularly on projects constructed in the last few decades that use rammed earth, mud brick, compressed earth, cob, and several other interesting techniques. It presents a selection of more than 40 projects that exemplify new, creative uses of the oldest building material on the planet.



Border Wall as Infrastructure

This project suggests that the U.S. Mexico Border wall should and could be thought of not only as security, but also as productive infrastructure—as the very backbone of a borderland economy. Indeed, coupling the wall with viable infrastructure—and this proposal focuses on water, renewable energy, and urban social infrastructure—is a pathway to security and safety in border communities and the nation beyond them.



Earthscraper

EARTHSCRAPER utilizes the 9 million cubic yards of dredged material that are to be removed from the channels of the Port of New York and New Jersey to create a mega-landscaped recreation site with open space amenities for the city of New York. The most promising site for EARTHSCRAPER is Governors Island, an abandoned island whose current form was created with the 4787000 cubic yards of fill excavated from the Lexington Avenue Subway tunnel in 1901.



Santuario de los Poblaadores

El Santuario de los Poblaadores was commissioned by the oldest church in Colorado, Our Lady of Guadalupe Parish. The design is an outdoor chapel and prayer labyrinth that represents the Mysteries of the Rosary. Just as the Rosary is made up of twenty "mysteries," the prayer labyrinth is also divided into four sections—each containing five small meditation chapels designed to help focus prayers on the life, ministry and Passion of Jesus in the Catholic faith.



Mud House

The Mud House is located in a desert landscape in Marfa, Texas. Dcotillo, mesquite, yucca and sotol serve as the backdrop, and the view of the landscape from the house extends out to the Davis Mountains in the distance. The contrast between the thick, earthen walls and the concrete lintels that interpenetrate the façade to create openings, as well as the use of stainless steel in contrast with the earth, create a tension between old and new, rough and smooth, and the industrial and non-industrial.



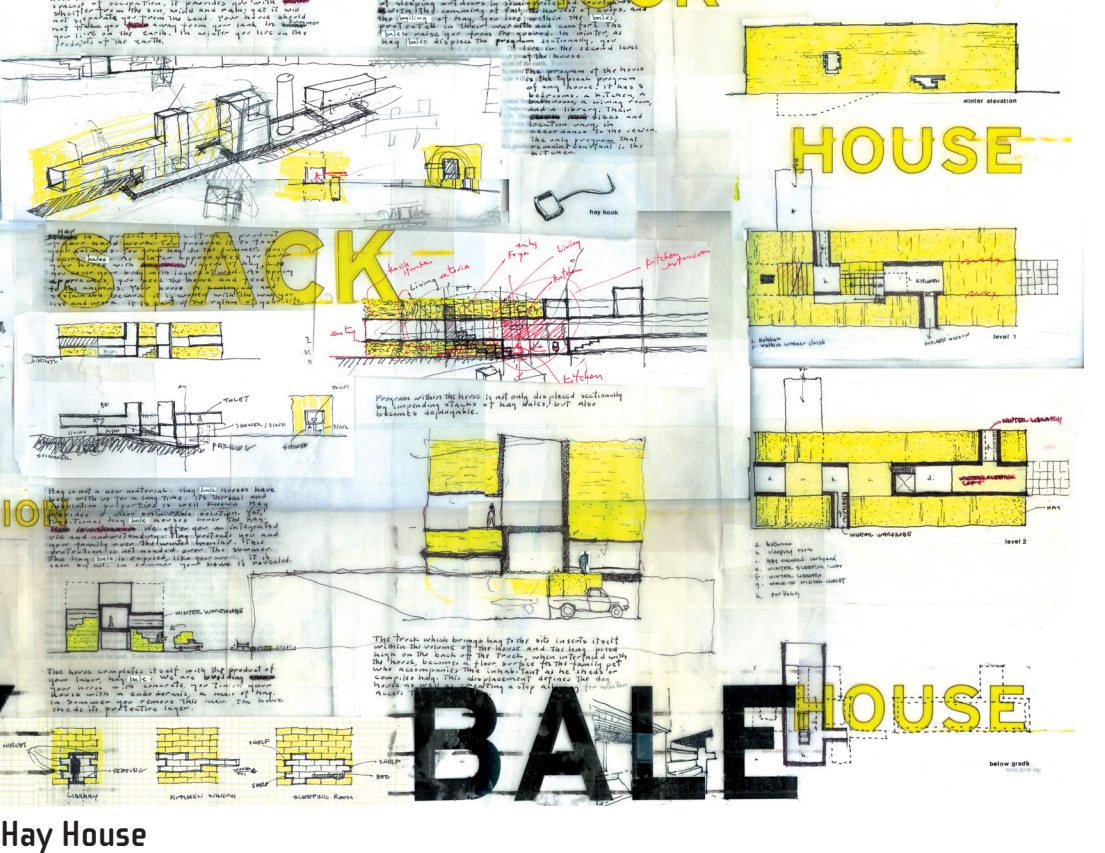
VAC-PAC

Te VAC-PAC is made out of Tyvek, a protective material that is traditionally used as a weather-resistant barrier wrap for homes and buildings, it helps combat wind, water, moisture and air infiltration. The use of a material such as tyvek has a history that alleviates any notions of current trends, ornament, taste or personal expression—allowing the jackets to exist outside the world of fashion but because of their inherent mode of construction they simultaneously exist outside the realm of conventional building.



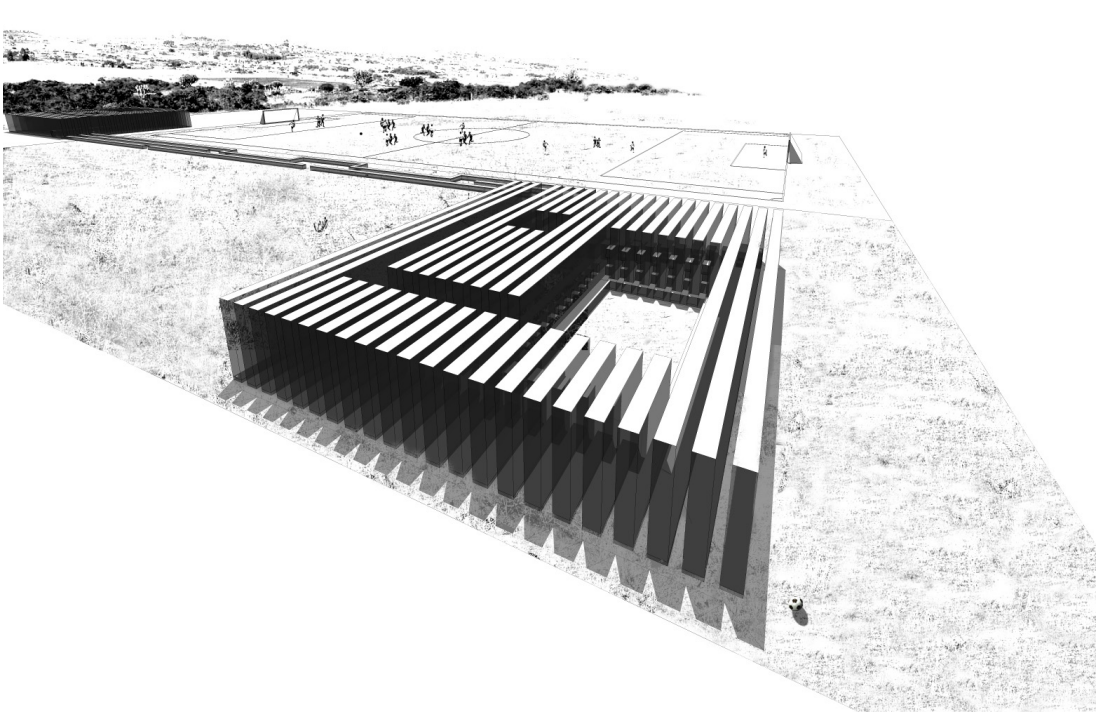
Hydro House

The Hydro House is an advanced thermal mass. Thermal mass is simply a solid or liquid material that will absorb and store warmth and coolness until it is needed. Through direct gain design, sunlight is admitted to the wall and virtually all of it is converted to thermal energy. The Hydro Wall is used for solar collection and thermal storage by intercepting radiation directly, and by absorbing reflected or radiated energy.



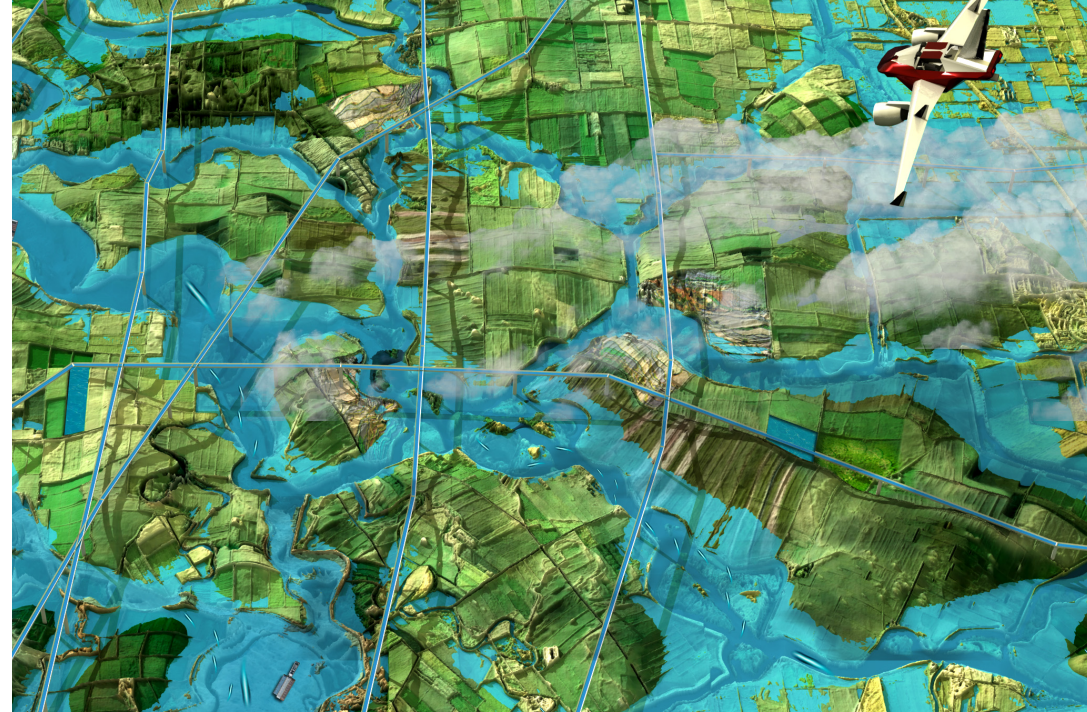
Hay House

The design announces the changing seasons and the harvest. As fall arrives, hay that is baled in the fields is brought to and stacked around the house. The protrusions and spaces of the house accommodate this stacking, creating new spaces and enclosures suitable for the coming winter. In winter the house is cloaked in a warm, aromatic layer of hay bales. As winter ends and spring arrives, the layers of the house are slowly peeled away as the bales are fed to animals. By summer, the house is



Siyathemba Pitch Wall-Scape

The Siyathemba Pitch Wall-Scape is a community gathering place for children and adults. Constructed of mud-brick, the labyrinthian Wall-Scape contains passageways and a small play room for young children and a larger, private room for changing with storage areas and benches. The changing room can also serve as a class room, or as a private meeting space for patients.



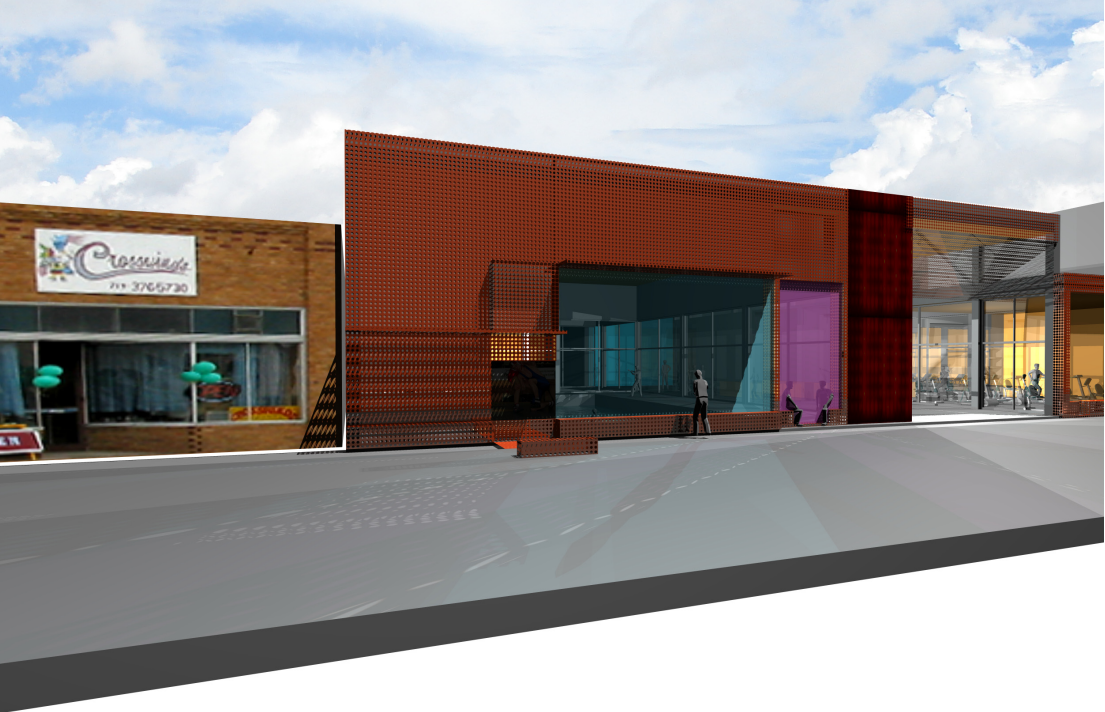
Food Archipelagos of the Sacramento River Delta

In the next 100 years, the ocean will rise approximately 1 meter, completely inundating the nation's most fertile region with sea water. In order to maintain channels and harbors at safe depths, periodic dredging is required. The SRD is one of the most fertile agricultural areas in the nation. By relocating dredged material to the existing islands, a new agricultural topography is created—a mega terrace—and the precious farmland continues to be productive after the inevitable seal-level rise.



Hydro House

The Hydro House collects water to use as a thermal mass and for evaporative cooling. The Hydro House has a roof pond, which contributes to thermal comfort in desert environments. As water runs off the roof it is collected in the Hydro Walls that enclose the house. The walls store the water and take advantage of the flywheel effect to help keep the interior climate controlled.



Antonito Community Center, Antonito

The architecture opens both physically and visually to the Main Street allowing for passers-by to see and hear the activities of the center. Large glass openings and operable panels allow views to the swimming pool and the exercise and weight rooms. The building facade also has integrated LED screens that display community calendars, events and schedules, such as wrestling matches, movie nights, yoga classes, racquetball tournaments and swimming lessons.