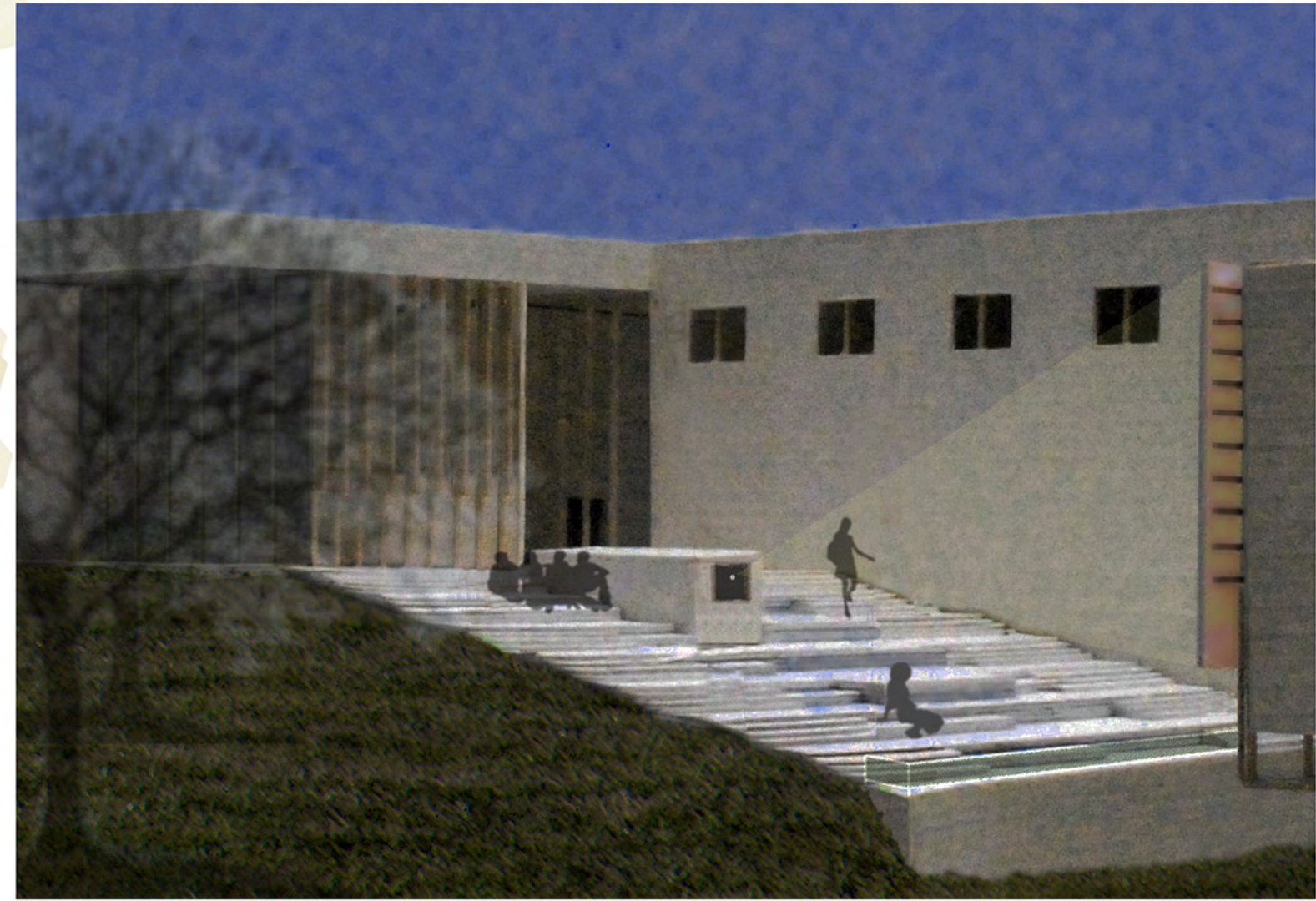
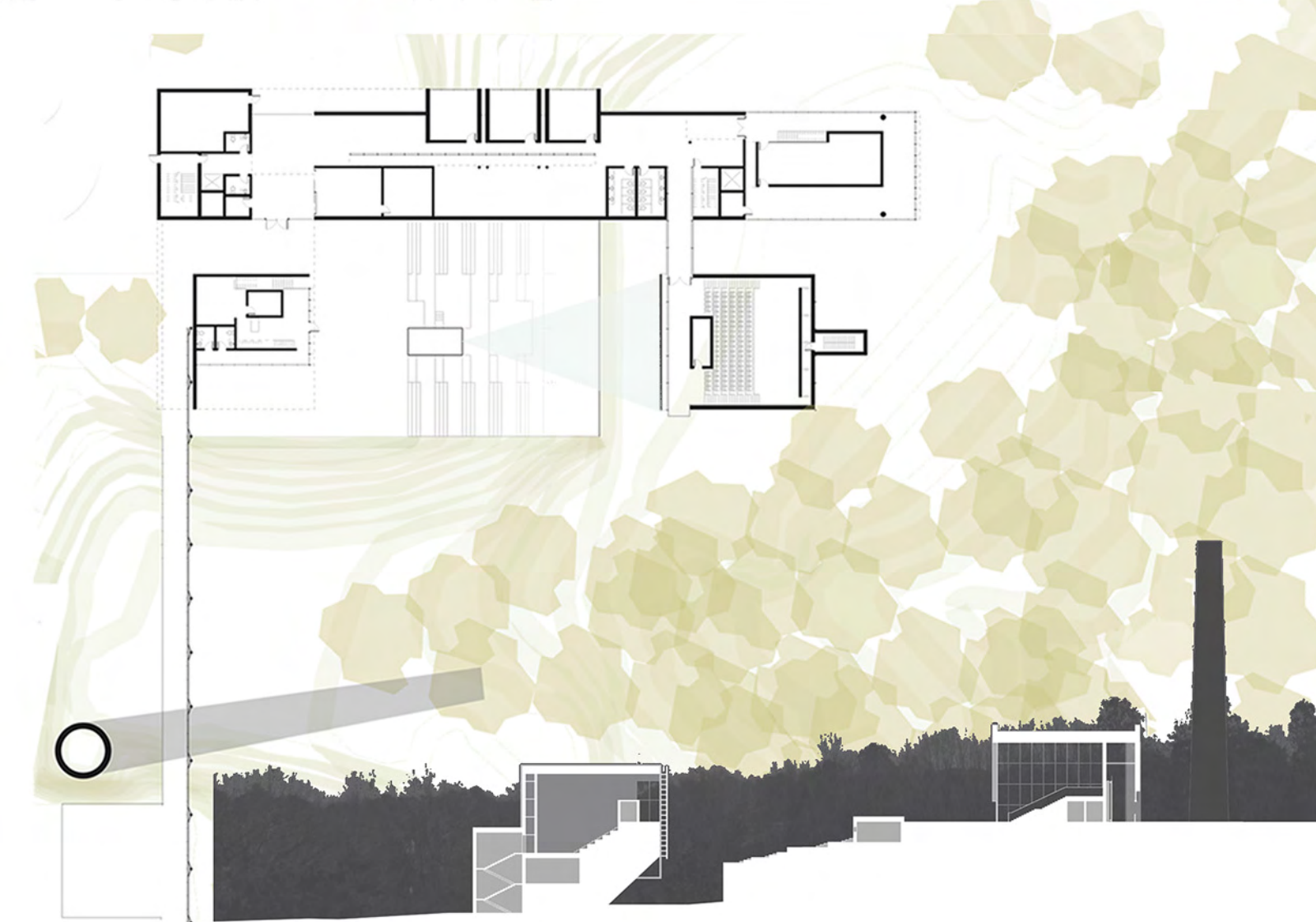
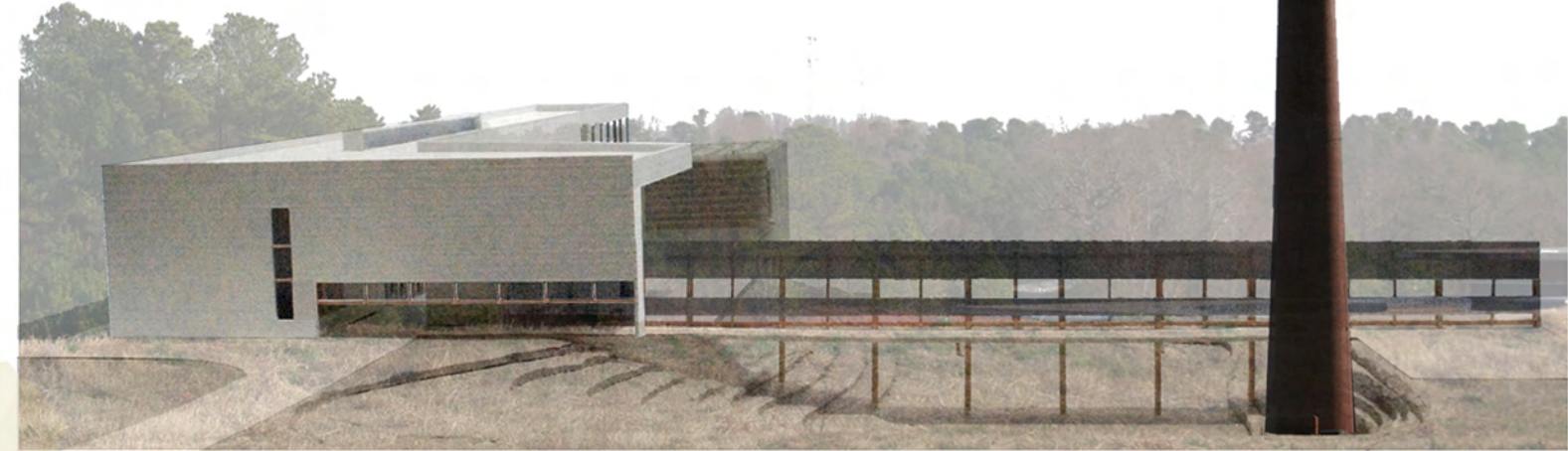
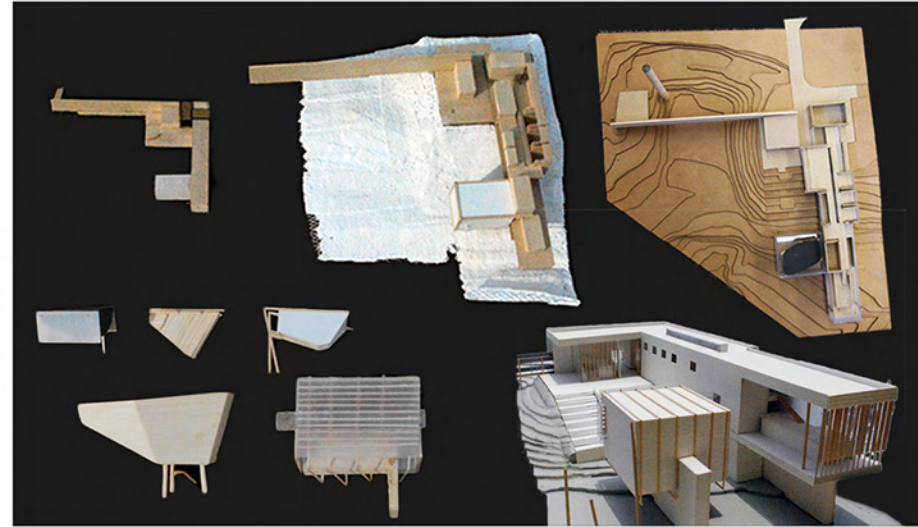
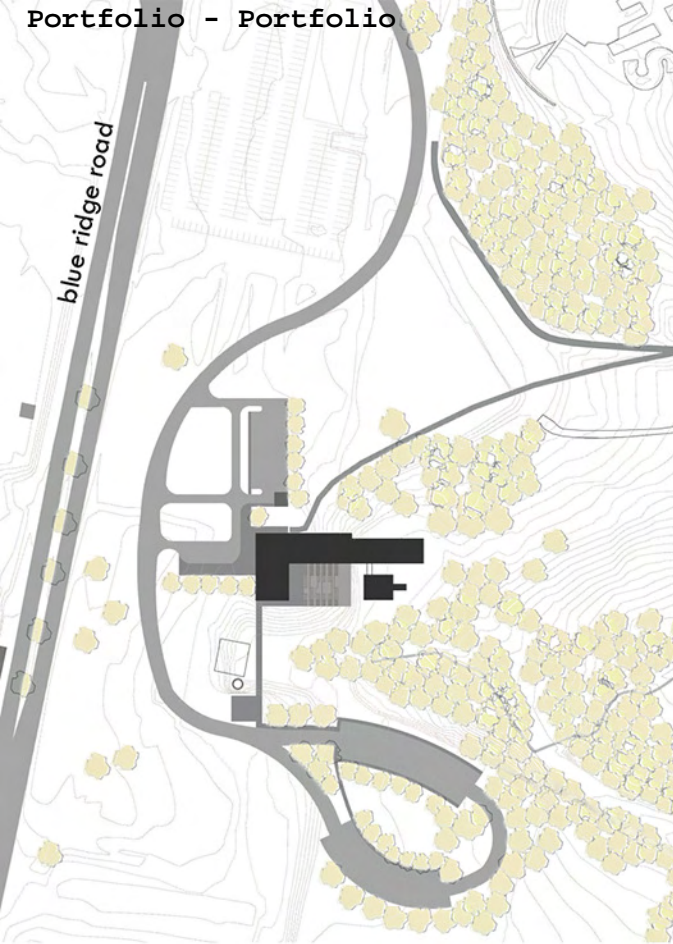


mary englund  
2011 PORTFOLIO

fall 2009 **nc film institute**

raleigh, north carolina

The project appropriates a sense of place along Blue Ridge Road through its connection to the existing smokestack: a thin wall and bridge run out to the tower and guide visitors into the institute. Once inside, the visitor is disassociated from the road as the institute reorients itself, projecting and spilling out into the woods. The theater itself is a separate vessel, a floating piece of space docking at the pier.

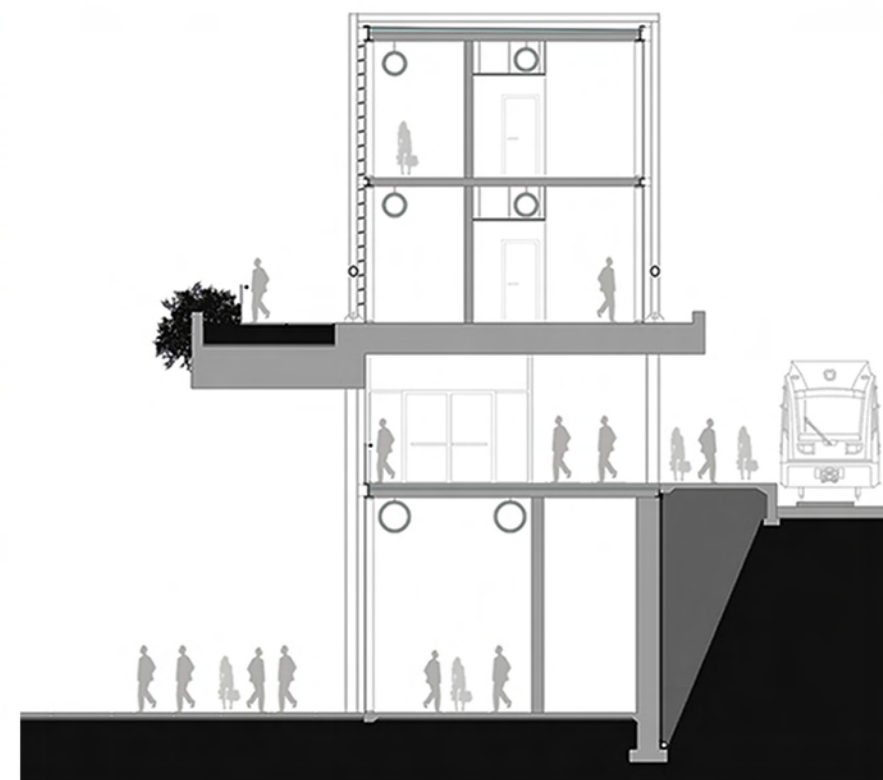
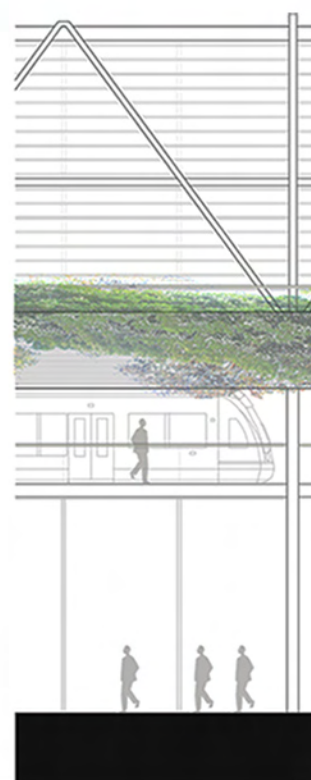
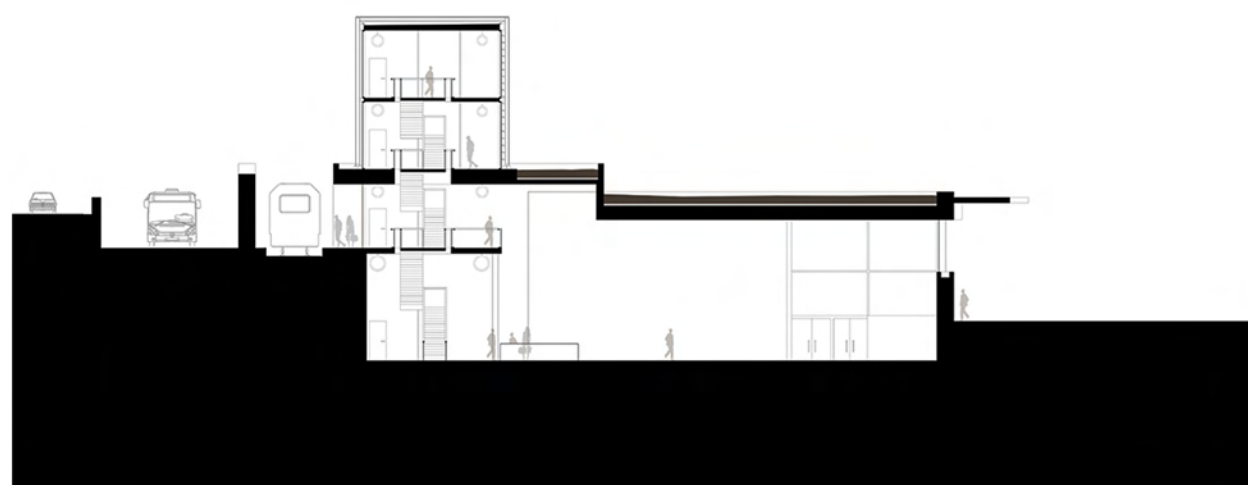
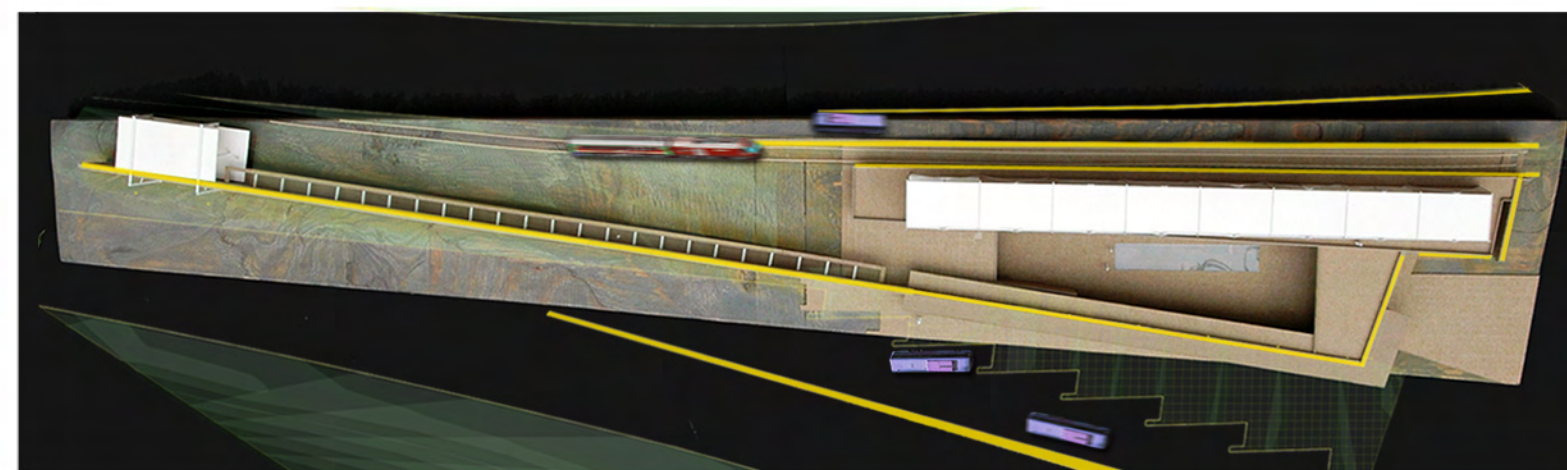
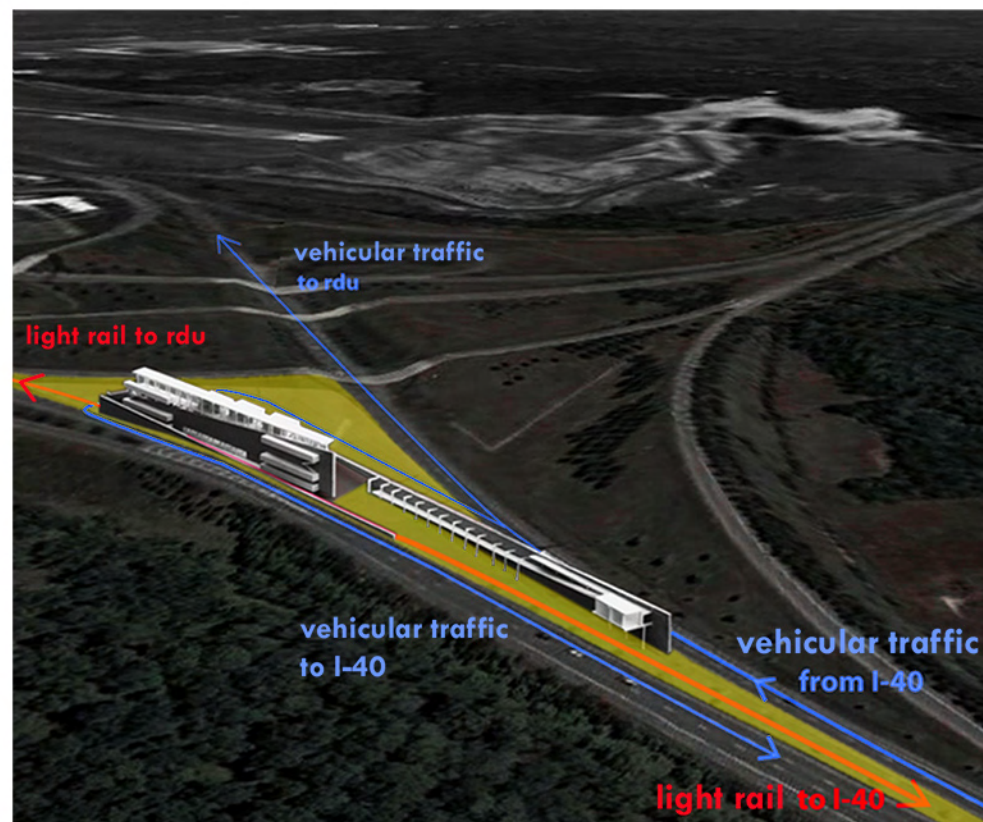




## spring 2010 **rdu transit center**

morrisville, north carolina

The scheme guides cars, buses, and light rail into the site around heavy walls that define and protect a sunken courtyard from the vehicular traffic. The courtyard is further insulated by the center's public spaces which line three of its edges and open up into the central space. Hotel rooms are organized in a bar lifted off the ground plane, a private retreat from the activity below. Because the site is understood as an island, surrounded on all sides by busy roads, the center stretches itself and its program to optimize movement and exploration within the strict boundaries of the site.

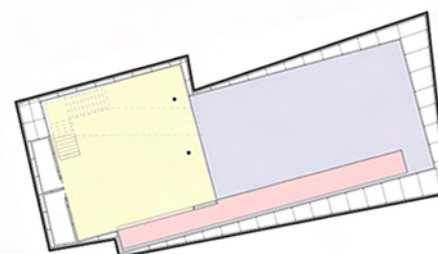
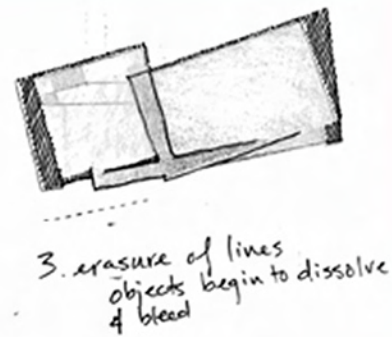
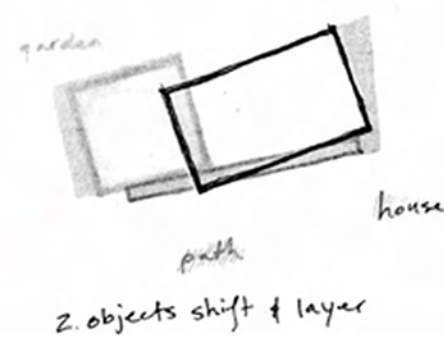
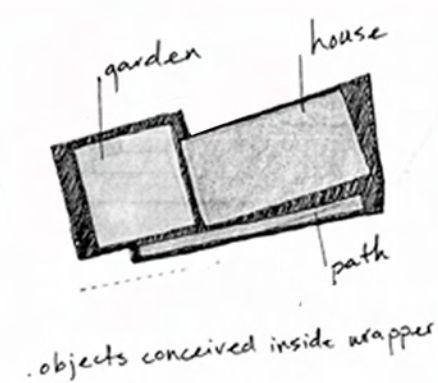
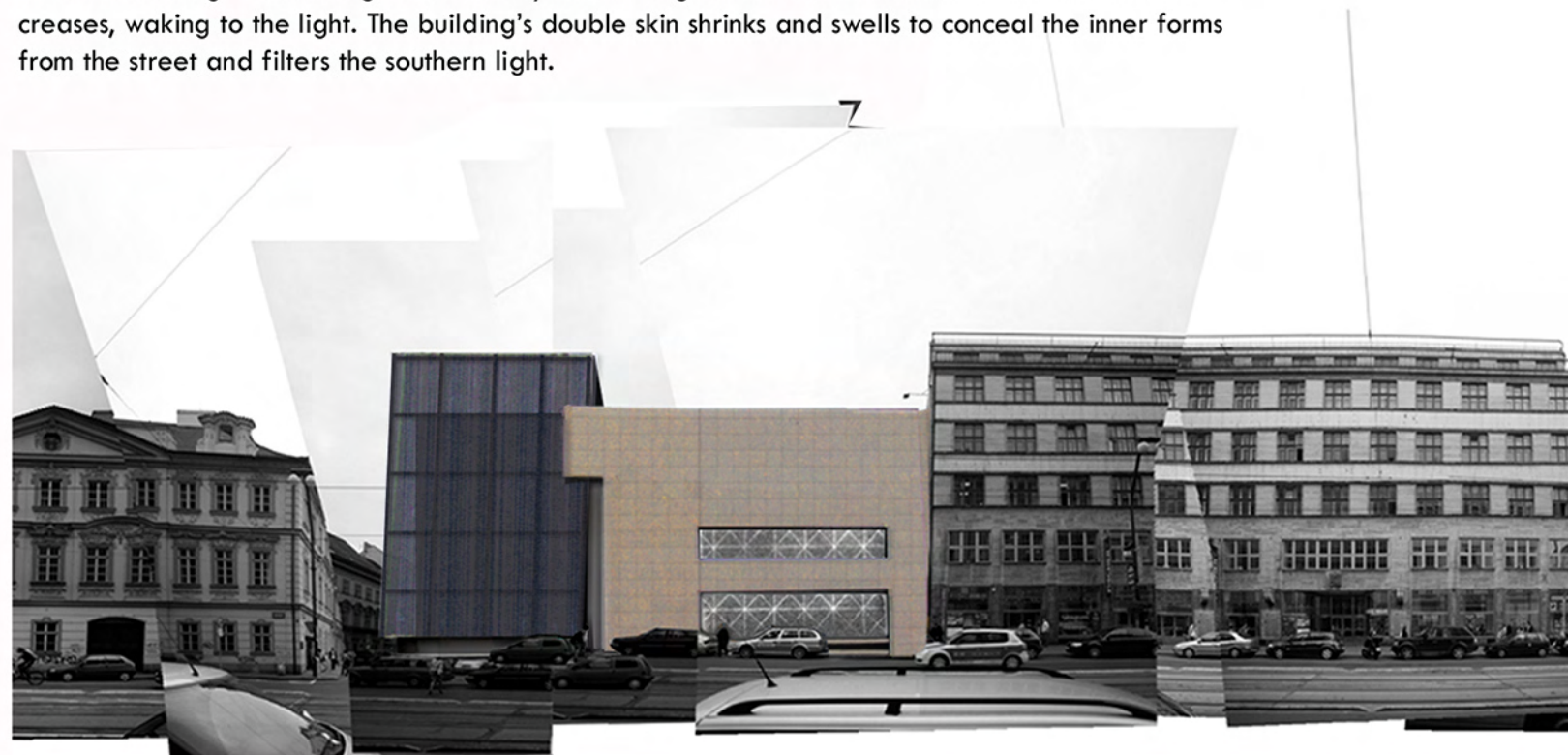
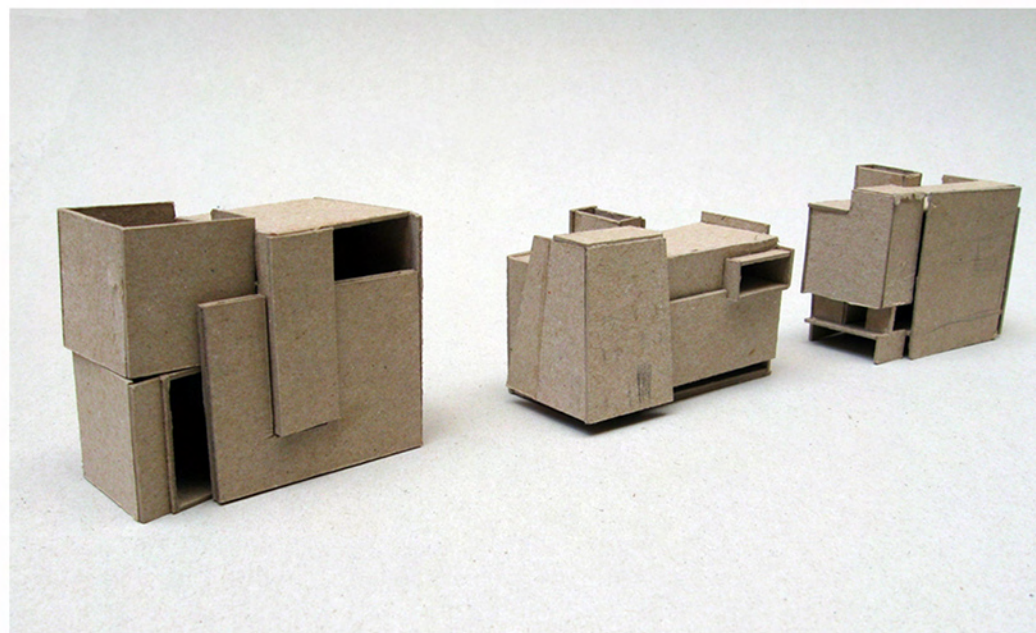




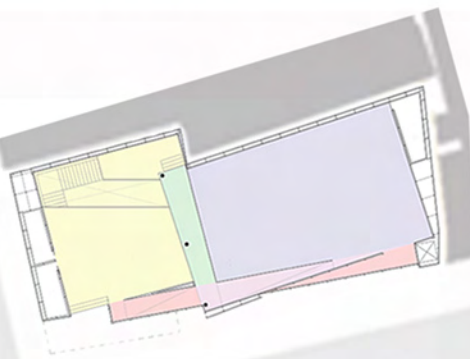
## fall 2008 **dream institute**

prague, czech republic

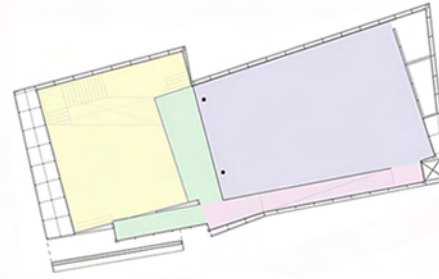
The design for a dream institute, a place for the archival, representation and study of dreams, begins with an exercise of imagination. The irregular boundary of the site is conceived as a response to interior, rather than exterior forces, volumes buried within the site that push out against their surroundings. Three regular forms lay still underground but shift and stir as the elevation increases, waking to the light. The building's double skin shrinks and swells to conceal the inner forms from the street and filters the southern light.



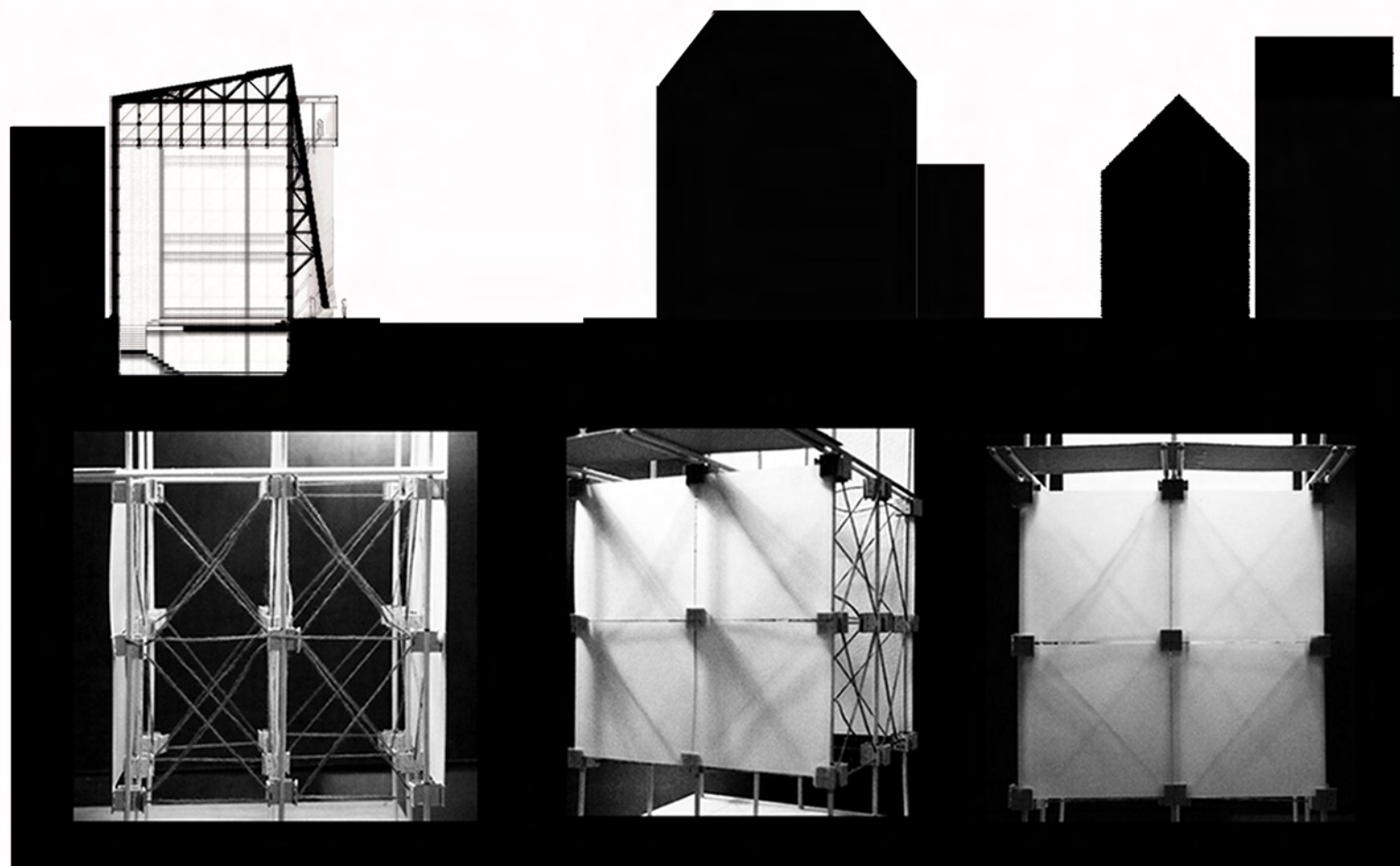
level -1

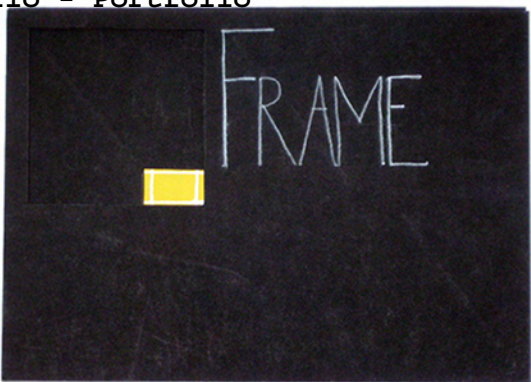


level 1



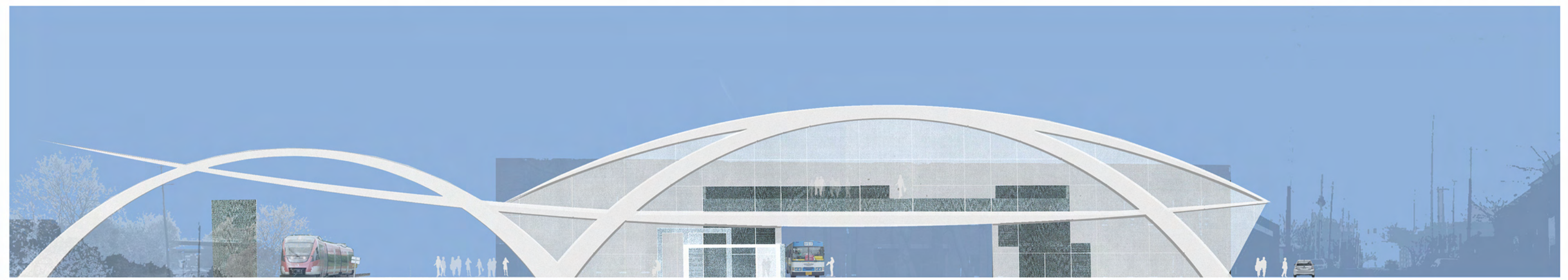
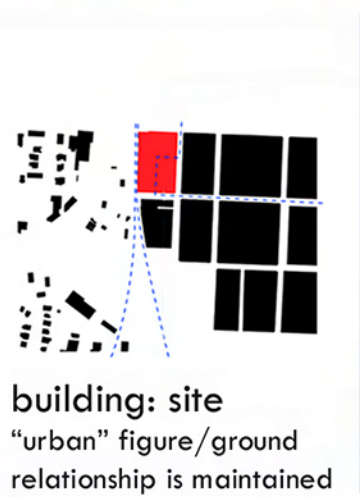
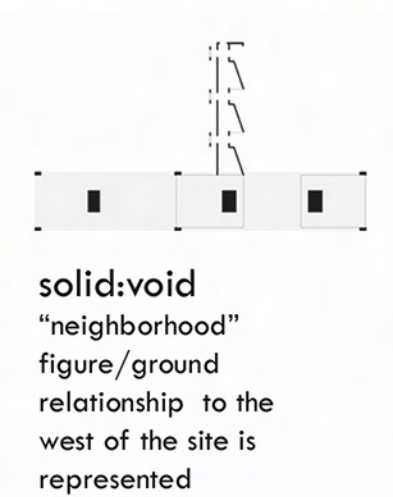
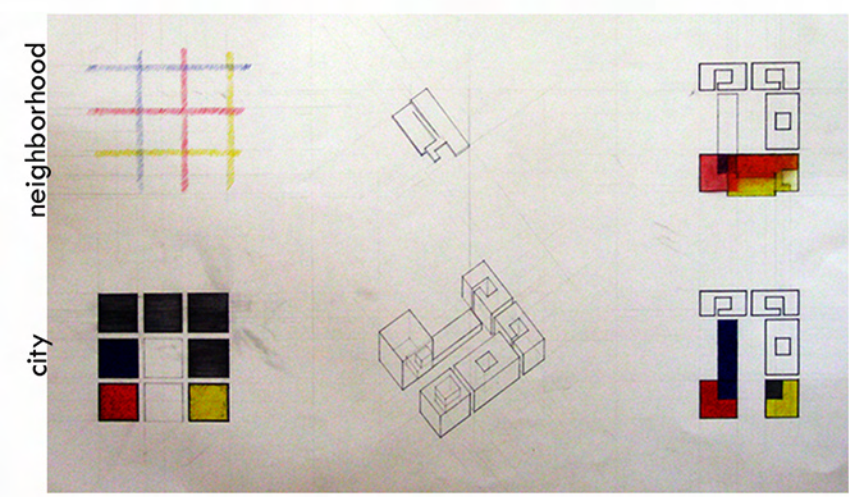
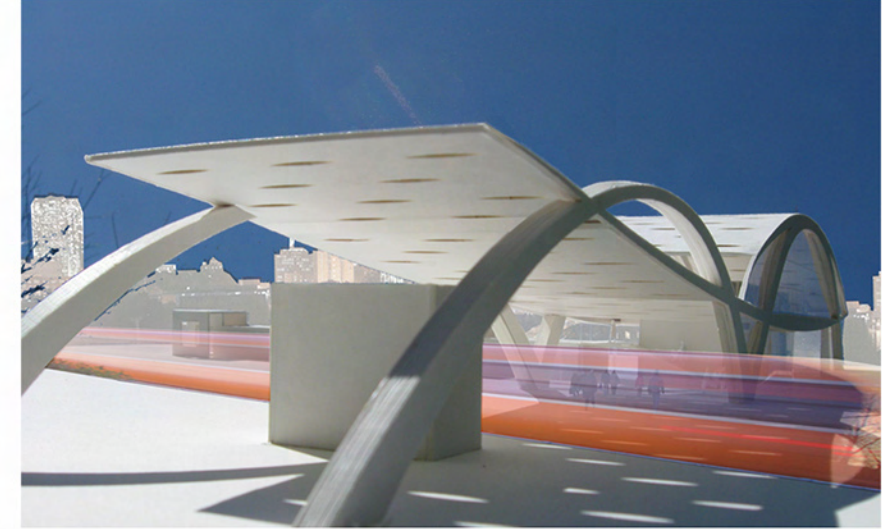
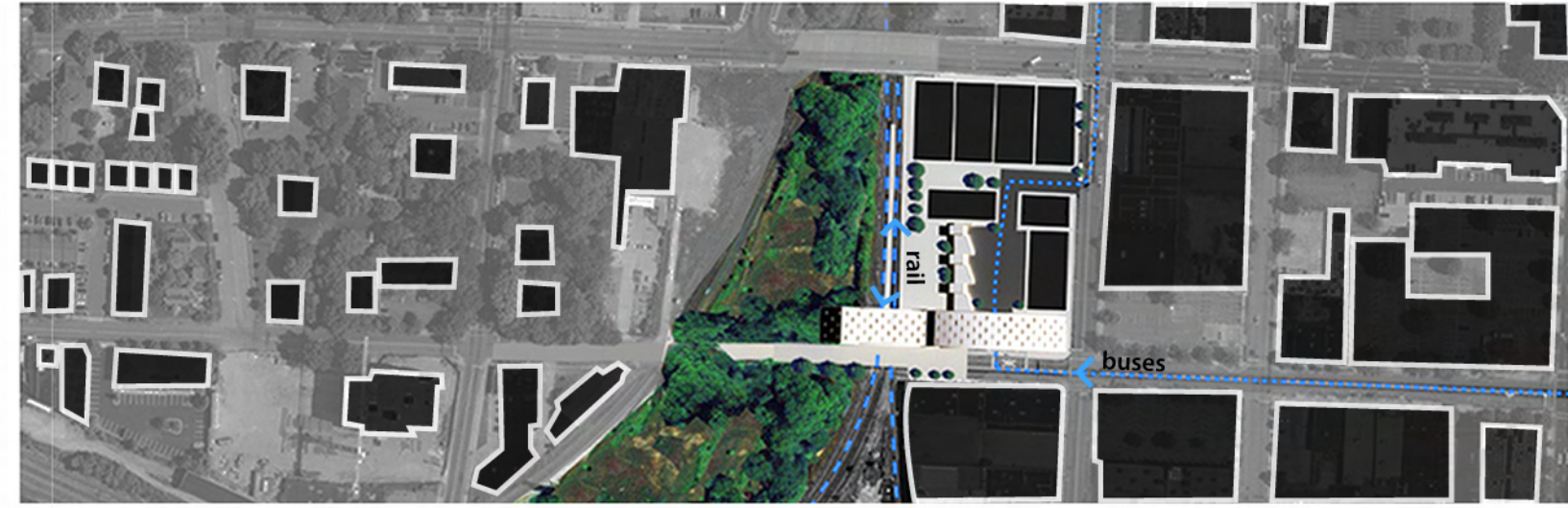
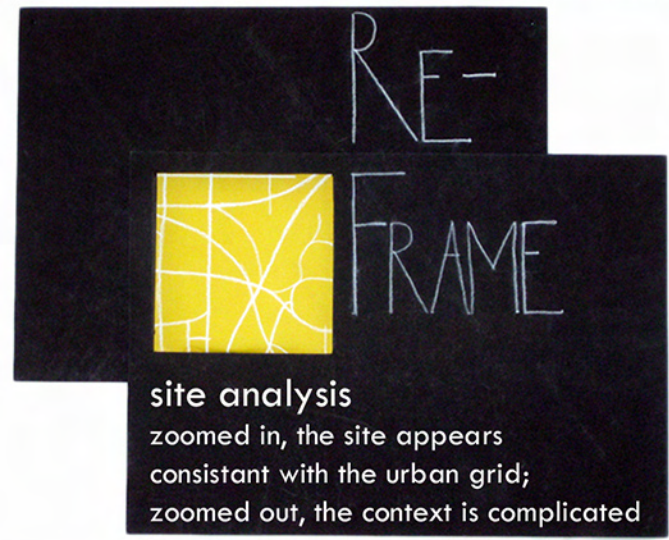
level 2





spring 2009 **raleigh transit center**  
raleigh, north carolina

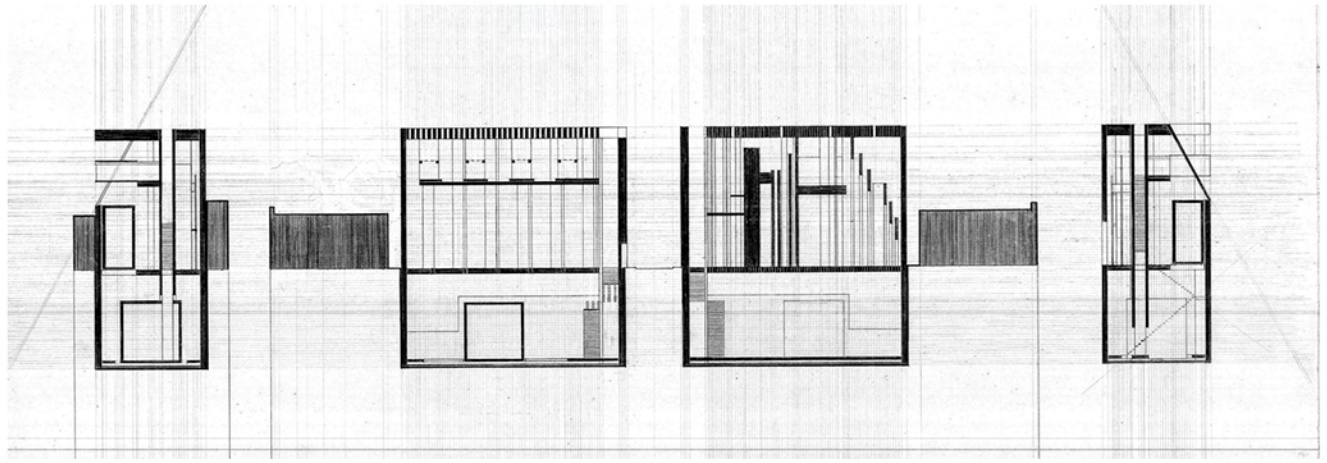
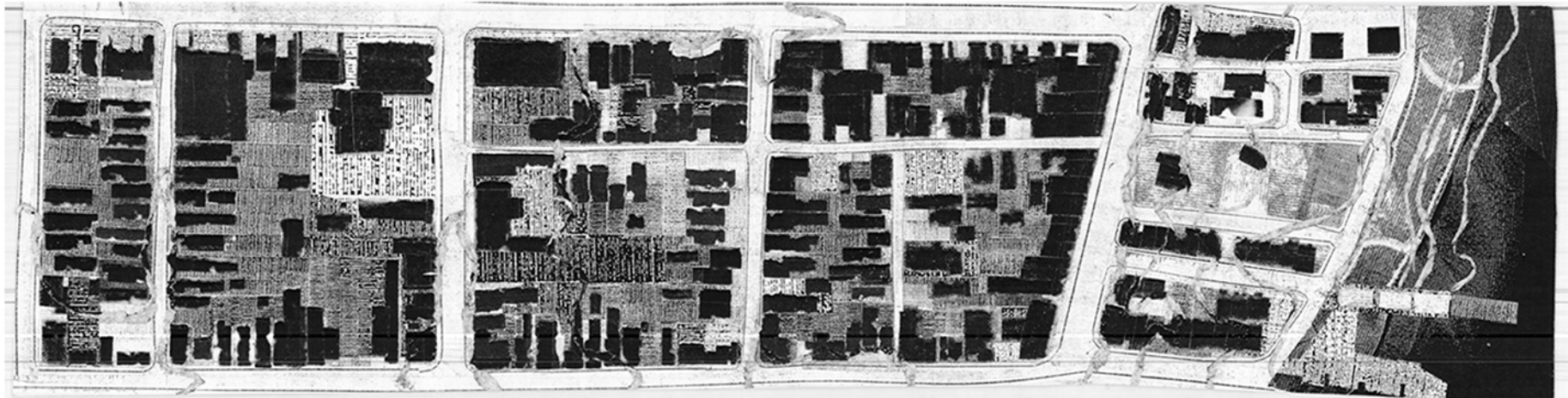
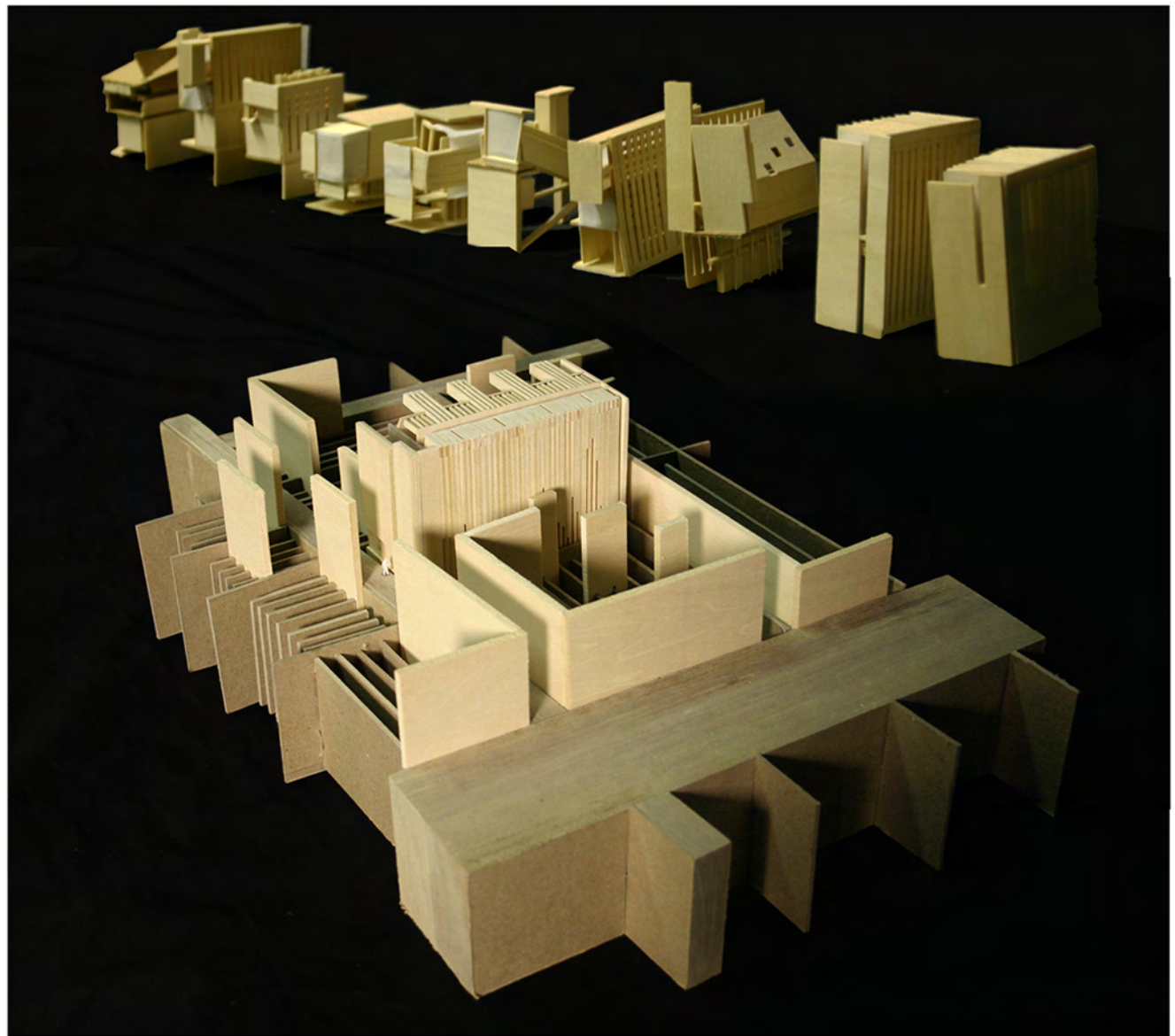
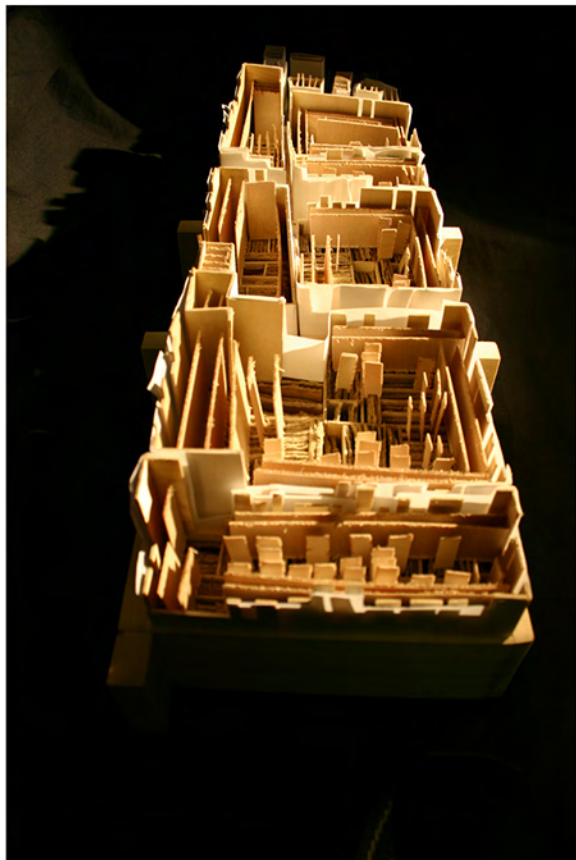
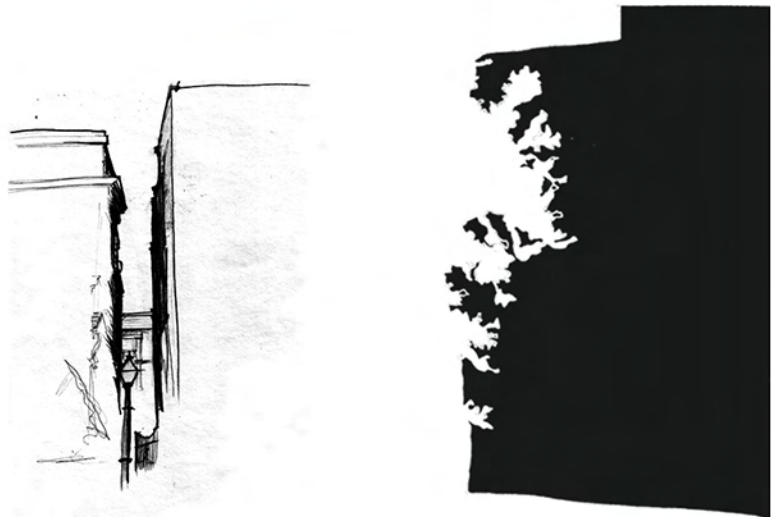
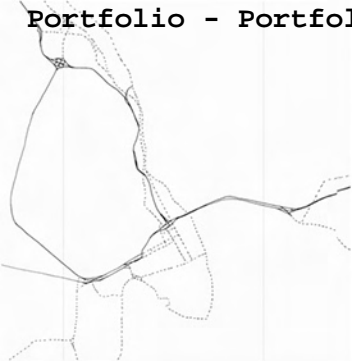
The project recognizes the two types of space found near the site and represents them at different scales. At the city scale, the center fills the site, maintaining the figure/ground of the urban grid. At the scale of the project, three service cores form the only positive space, allowing circulation, waiting, and watching to flow through the site.



fall 2006 **museum of the city**

charleston, south carolina

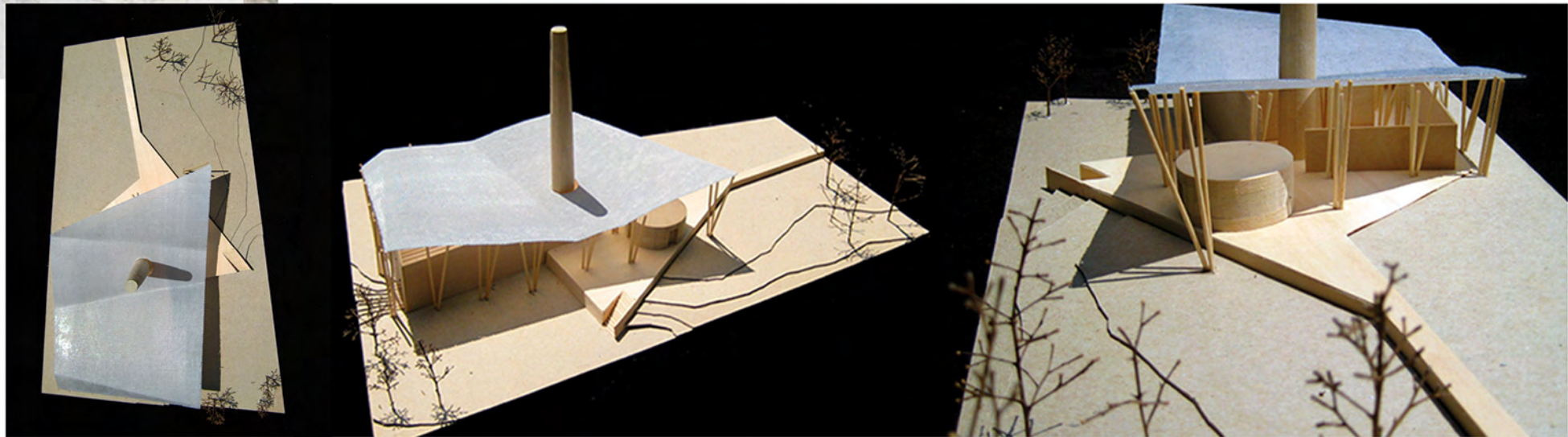
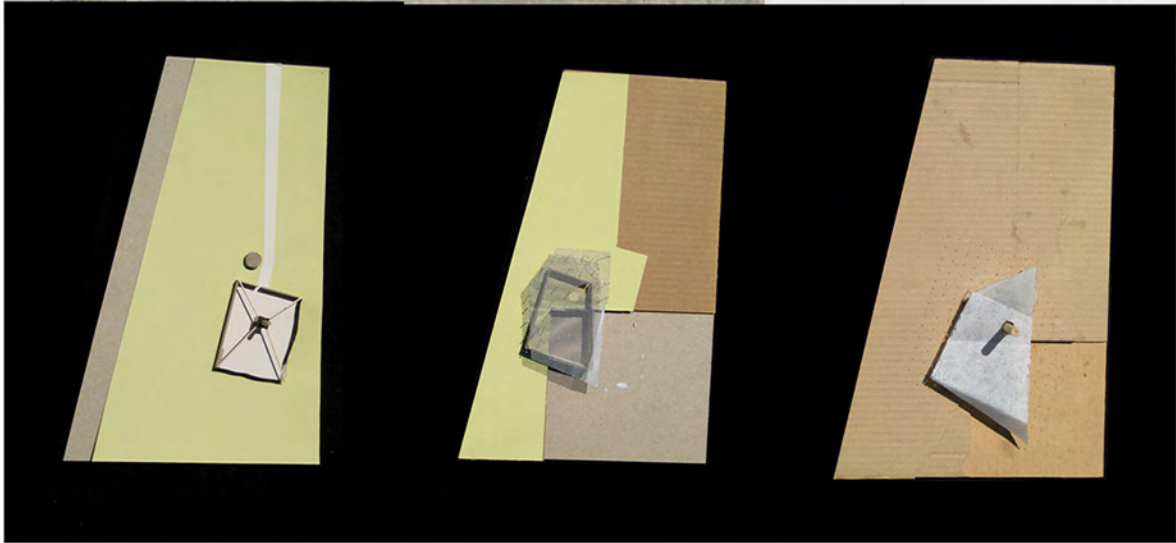
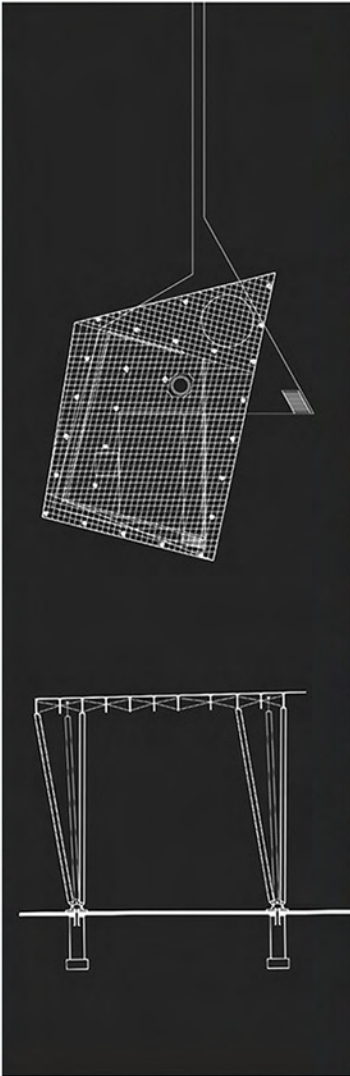
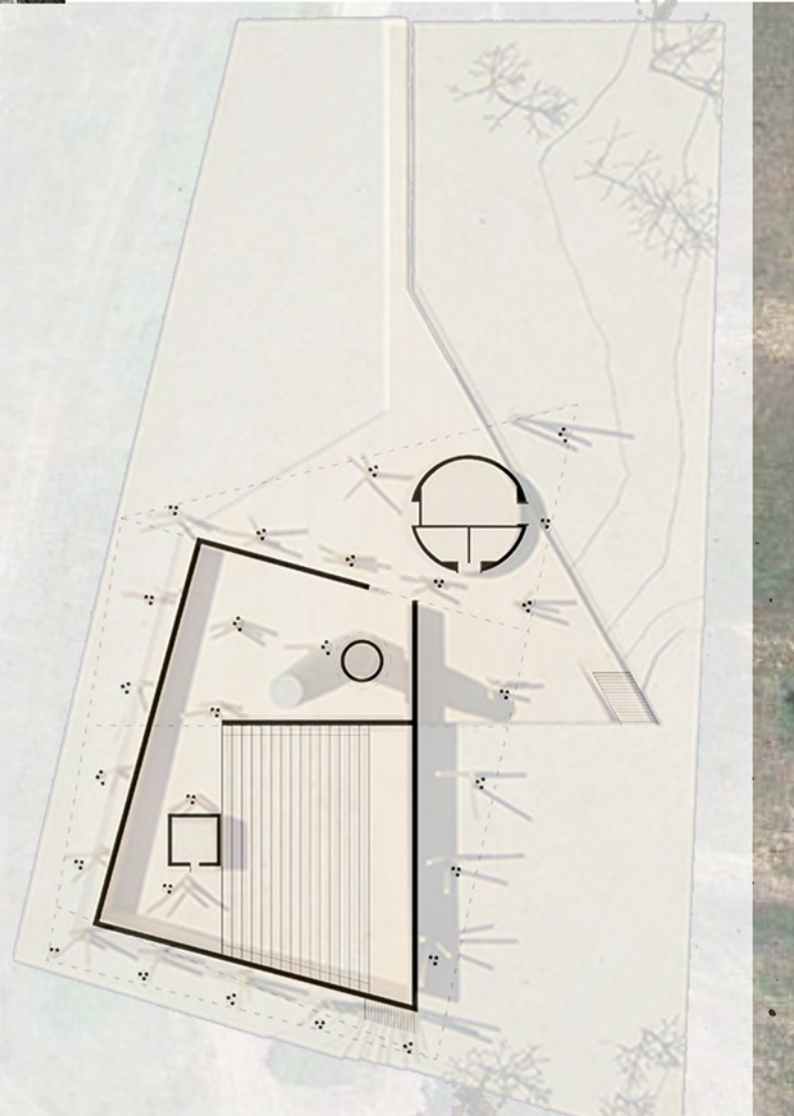
The project begins with a 2- and 3- dimensional urban analysis which discovers and illustrates the pervasive imagery of erosion and cracks in the city of Charleston. Following this study, the design for a Museum of the City divides the narrow site further into slices of program. Below grade, however, a single volume hovers over a shallow pool, lit by the deep crack in program above.





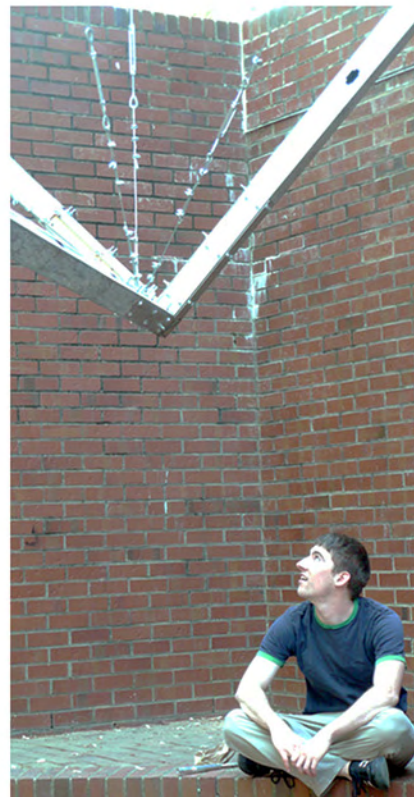
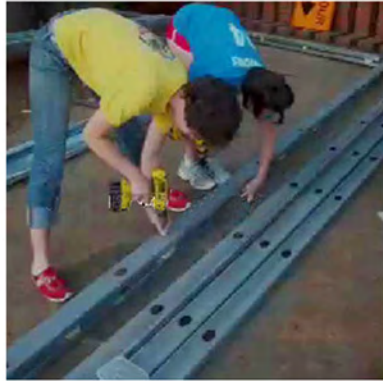
spring 2008 **blue ridge cinemascope**  
raleigh, north carolina

Five autonomous elements - wall, floor, canopy, columns and a defunct smokestack - overlap to create an increasing sense of enclosure and boundary in a non-hierarchical design.



A studio design/build project constructed in the kiva on NC State's Kamphoefner Plaza, the assignment stipulated a temporary intervention that would not modify the kiva or leave any permanent marks. Design and construction, both of which were group efforts, lasted two weeks. The project was on display for a week, during which it was documented by individual studio members, and then disassembled.

spring 2008 **the cube** north carolina state university



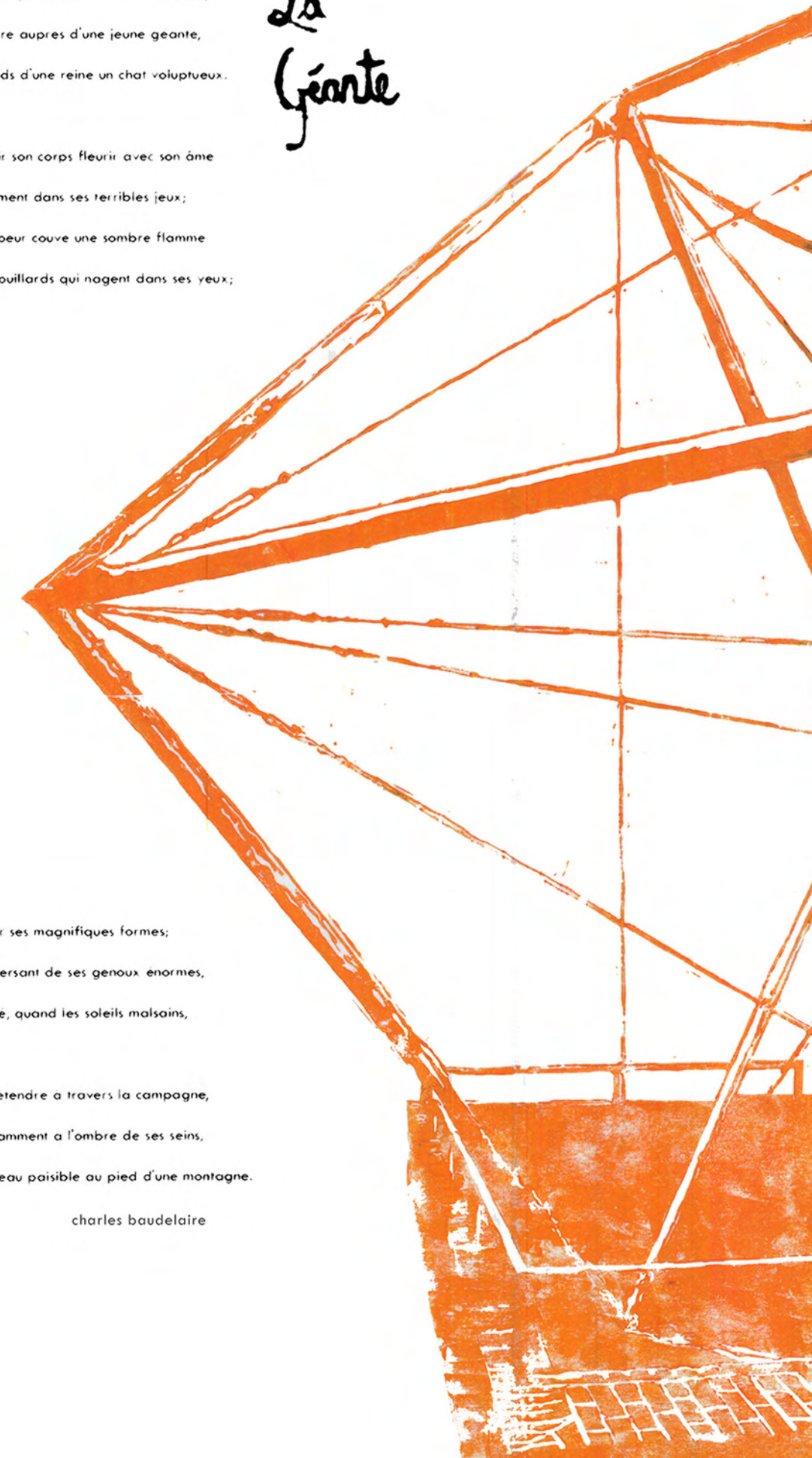
Du temps que la Nature en sa verve puissante  
Concevait chaque jour des enfants monstrueux,  
J'eusse aimé vivre auprès d'une jeune géante,  
Comme aux pieds d'une reine un chat voluptueux.

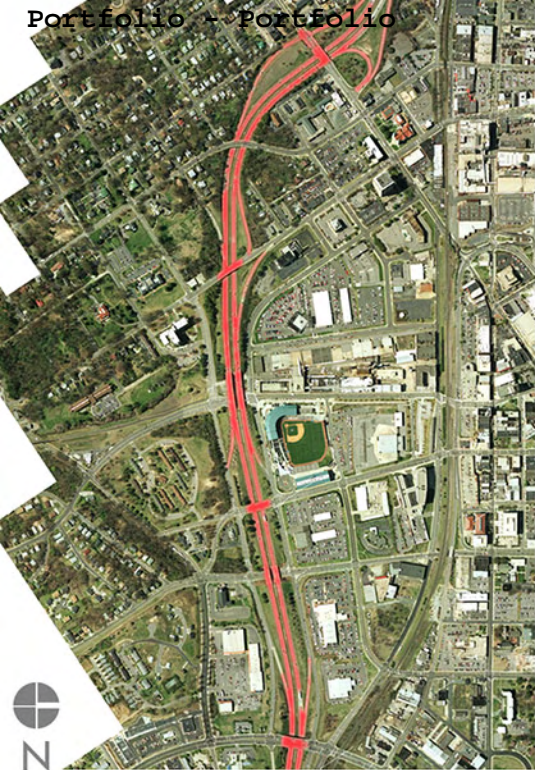
*La Géante*

J'eusse aimé voir son corps fleurir avec son âme  
Et grandir librement dans ses terribles jeux;  
Deviner si son cœur couve une sombre flamme  
Aux humides brouillards qui nagent dans ses yeux;

Parcourir à loisir ses magnifiques formes;  
Ramper sur le versant de ses genoux énormes,  
Et parfois en été, quand les soleils malsains,  
Lasse, la font s'étendre à travers la campagne,  
Dormir nonchalamment à l'ombre de ses seins,  
Comme un hameau paisible au pied d'une montagne.

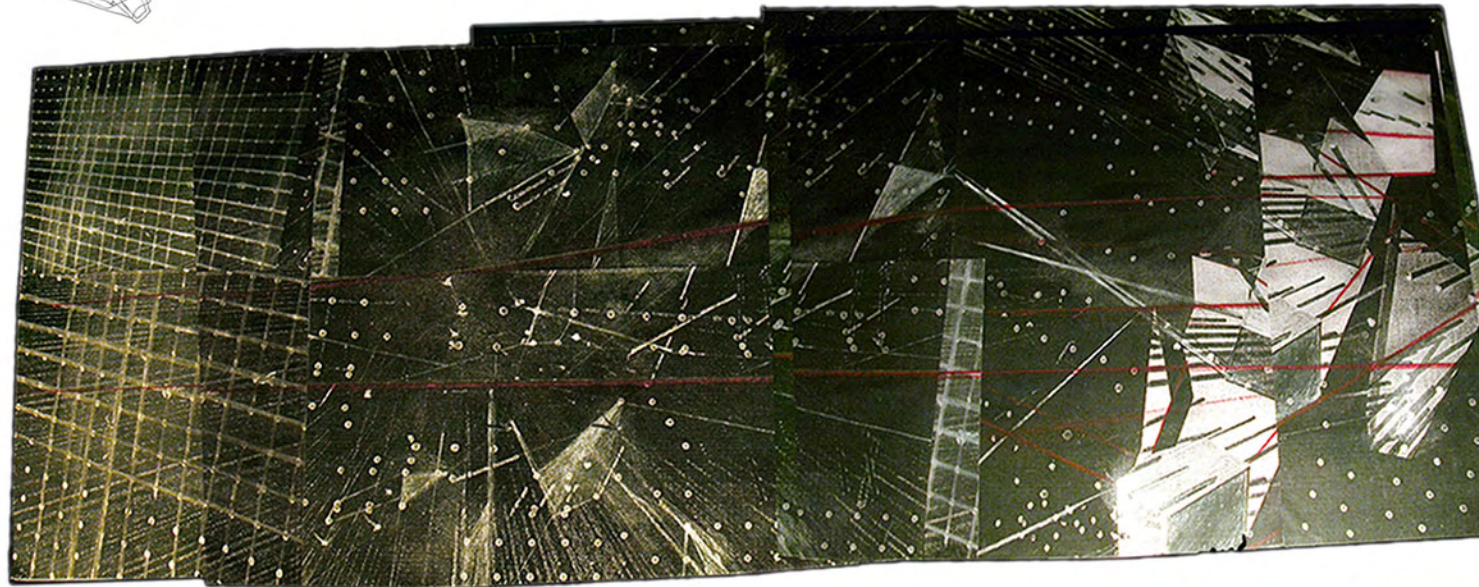
charles baudelaire



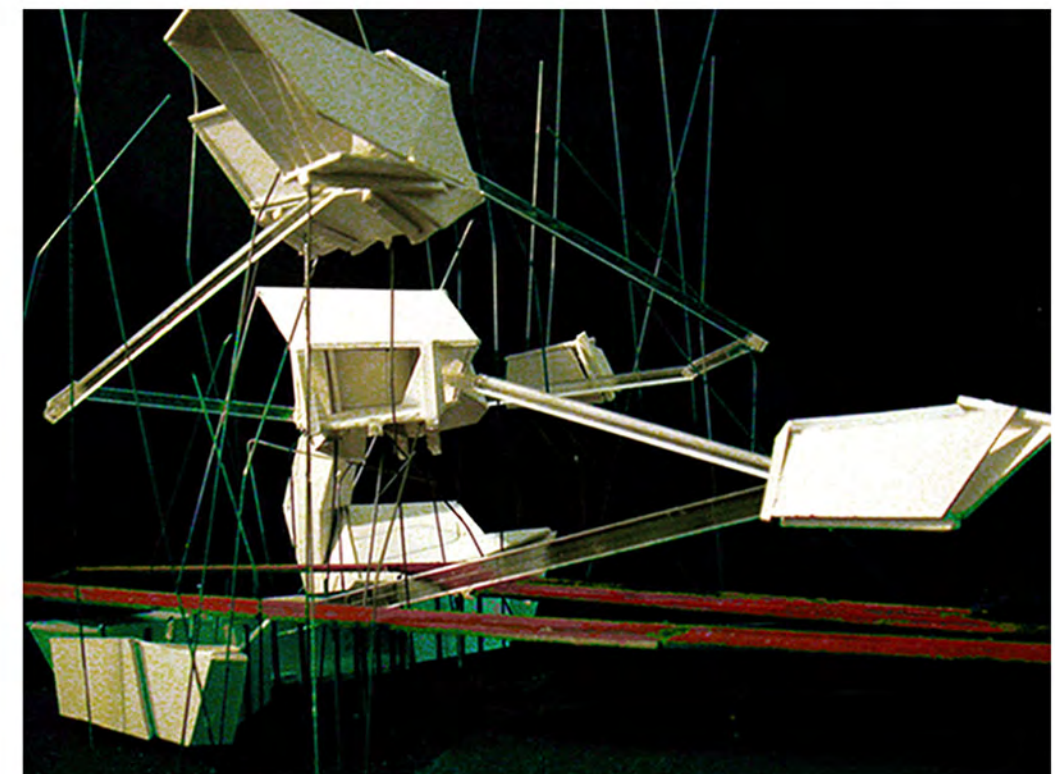
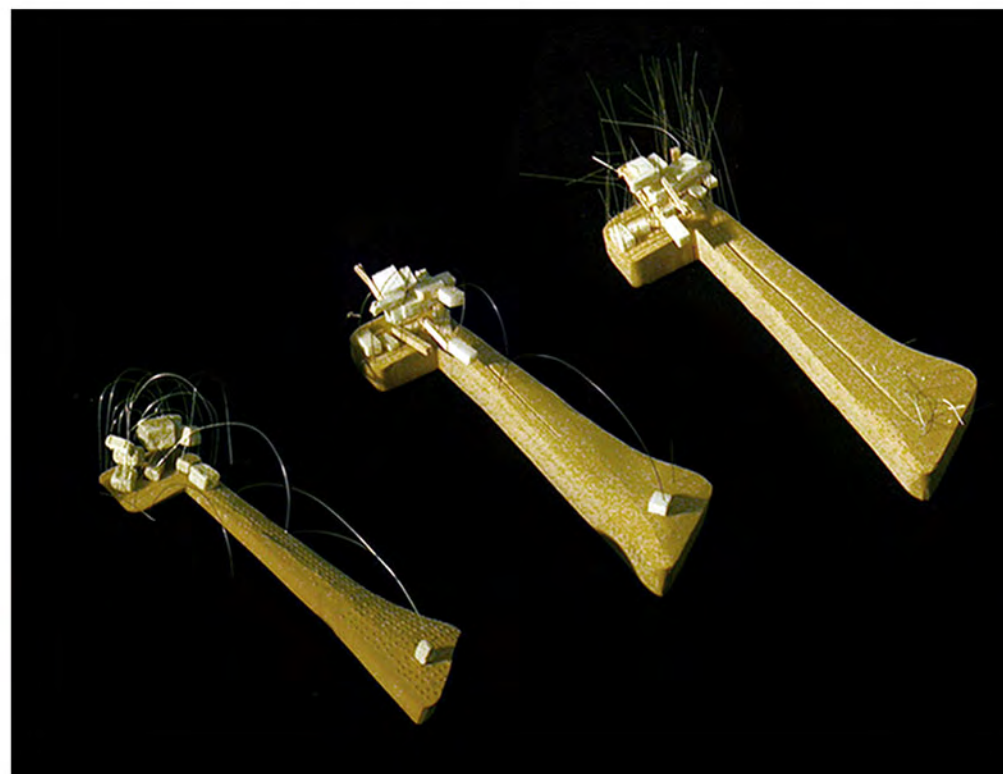
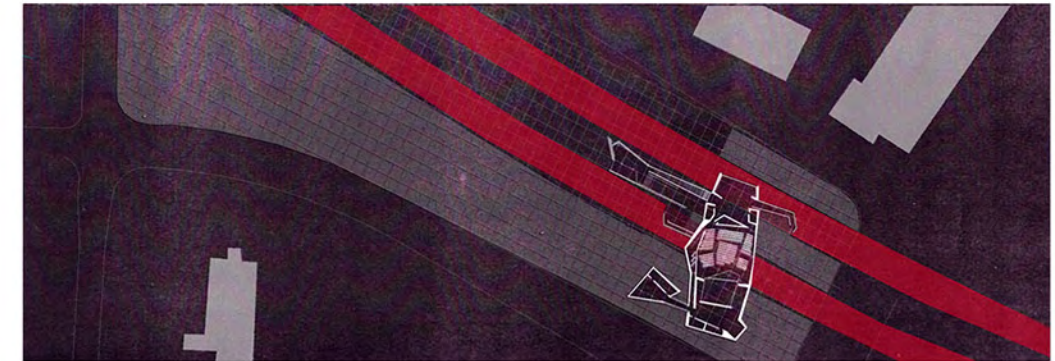


spring 2007 **theater for durham**  
durham, north carolina

Located on the edge of downtown alongside Highway 147, the fragmented design illustrates the rupture to Durham's city fabric caused by the introduction of the freeway. Broken pieces of program sit above, below and between the freeway, reconnecting previously divided sides of the city.



"machine of making form" diagram  
a visual creation myth, imagining the theater's inception as an accumulation of particals after an explosion



spring 2006 **ymca afterhours center**  
raleigh, north carolina

The project uses the precedent of the Cite de Refuge to inform the design, particularly in the use of repetitive and unique elements and the creation of progressive spaces in a small site.



building to site

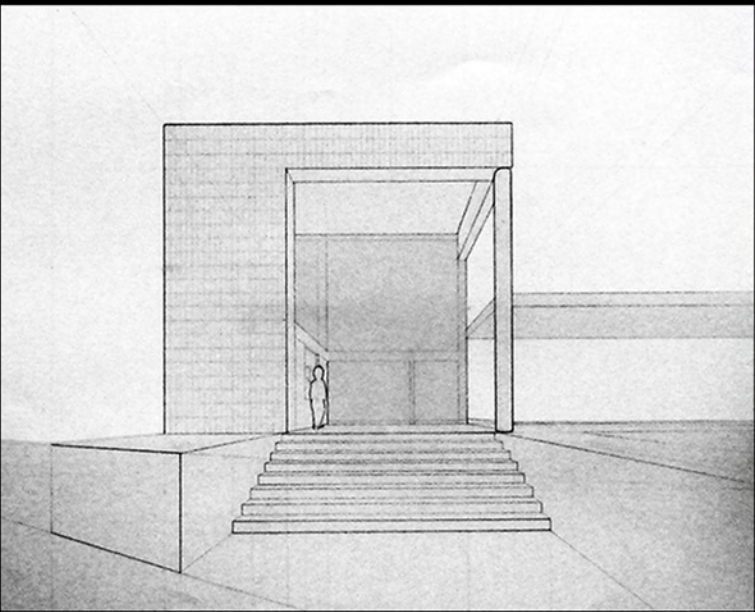
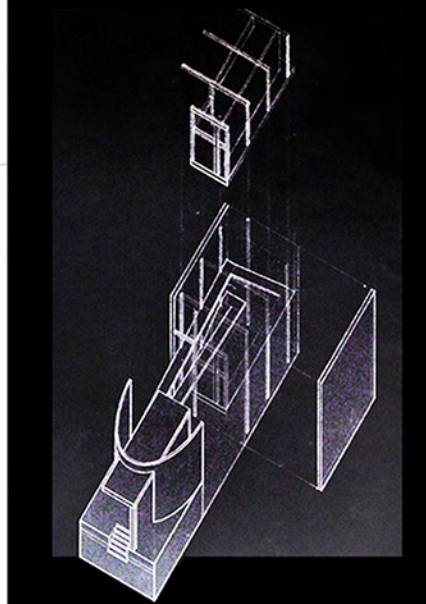
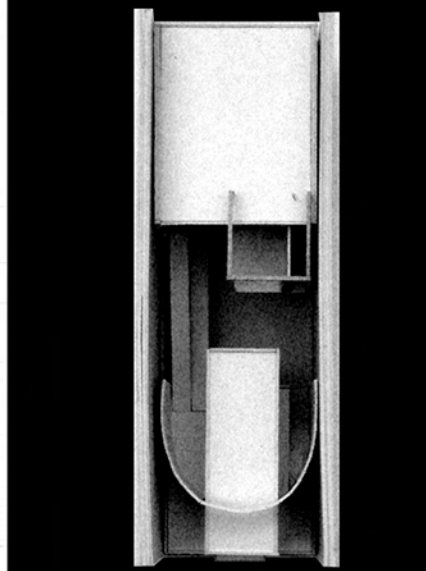
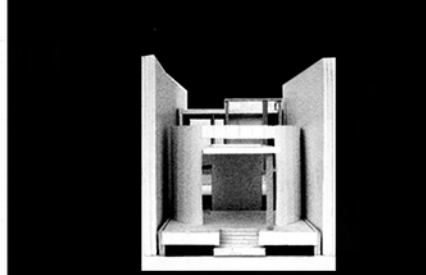
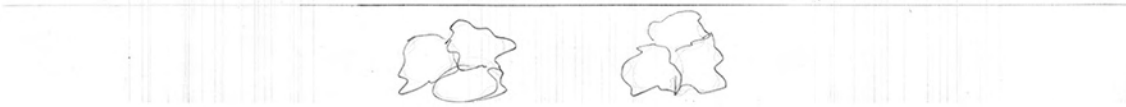
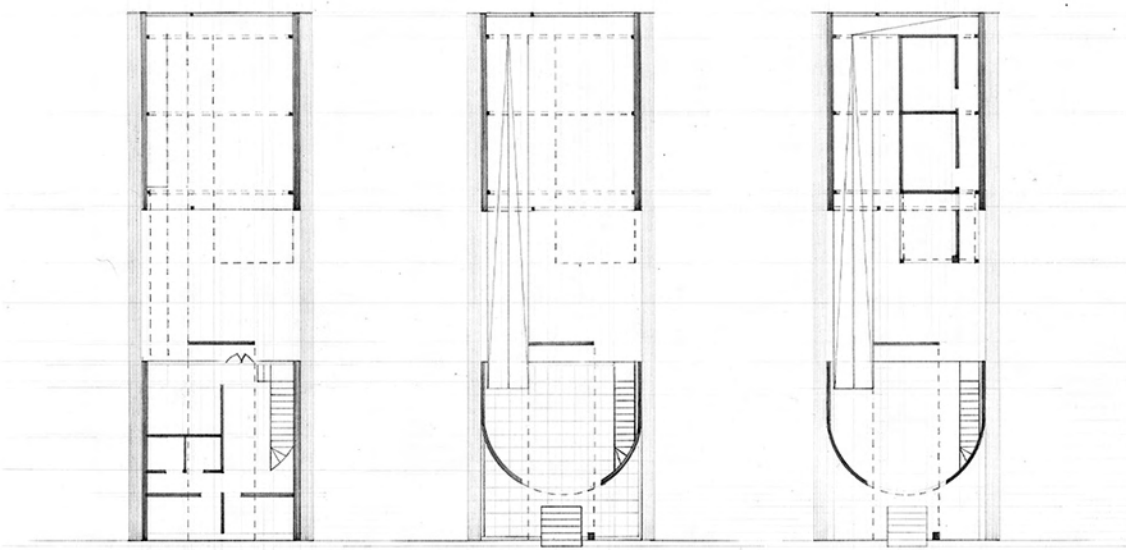
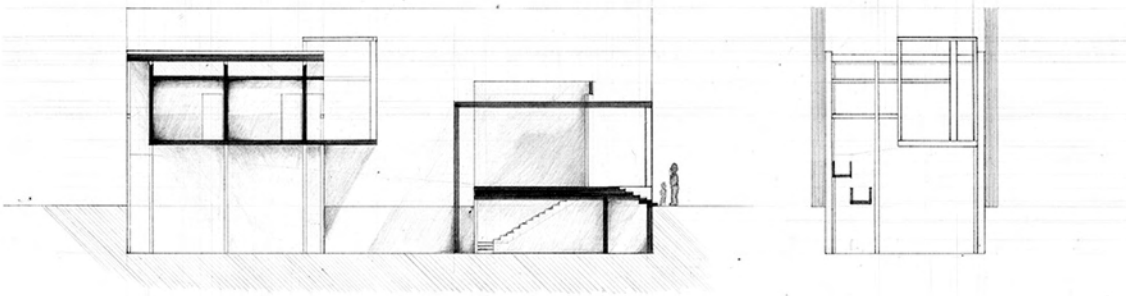
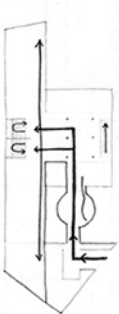
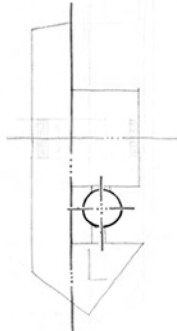
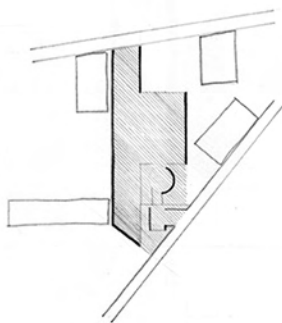
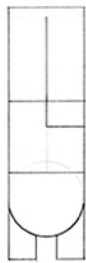
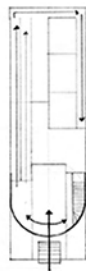
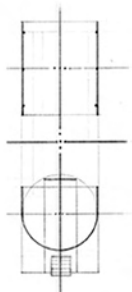
balance/symmetry

circulation

hierarchy

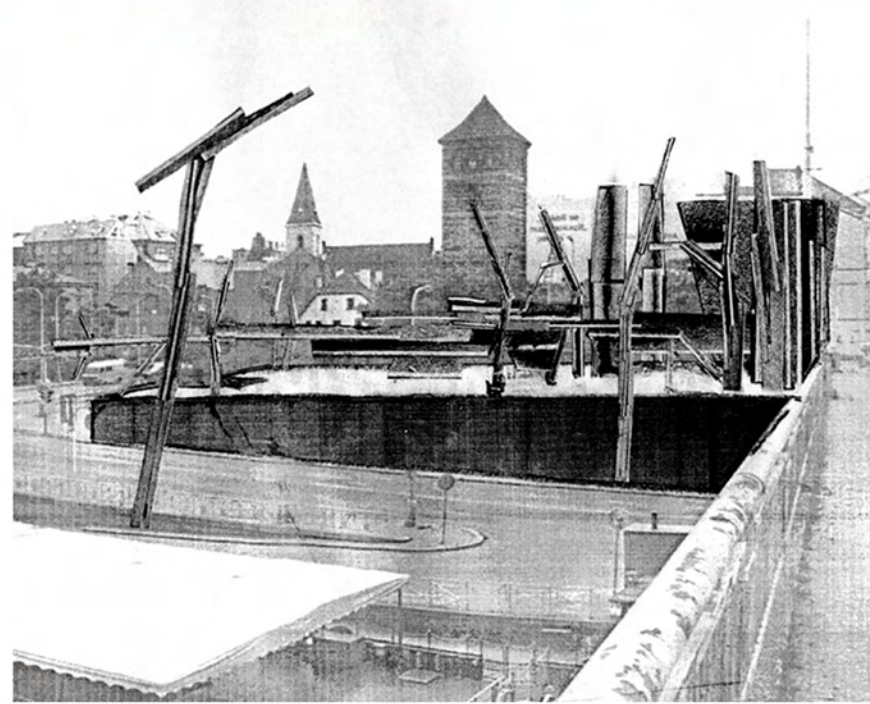
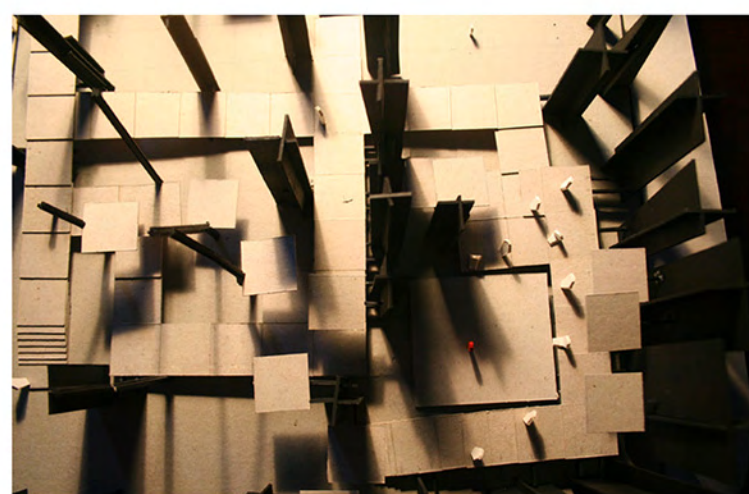
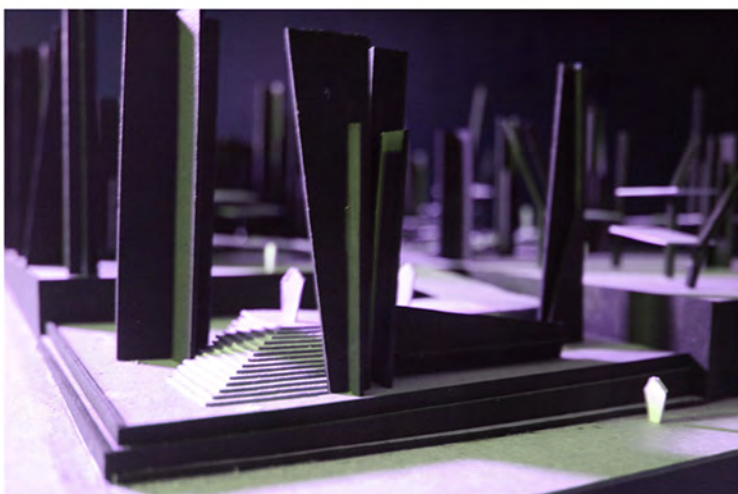
repetitive to unique

parti



Distorted cruciform columns straighten and stretch into chunks of wall, defining outdoor rooms in a city park. These sculptural steel structures support tiles of horizontal platforms which serve as path and shelter.

fall 2008 **embankment** prague, czech republic



3-dimensional precedent study imagines and narrates the generation of form of Moneo's Murcia Town Hall. The force of the adjacent Plaza Cardenal Belluga is seen as pulling the energy and weight of the town hall into the square, pushing open the facade and creating entry into the building.

spring 2007 **machine of making form**

